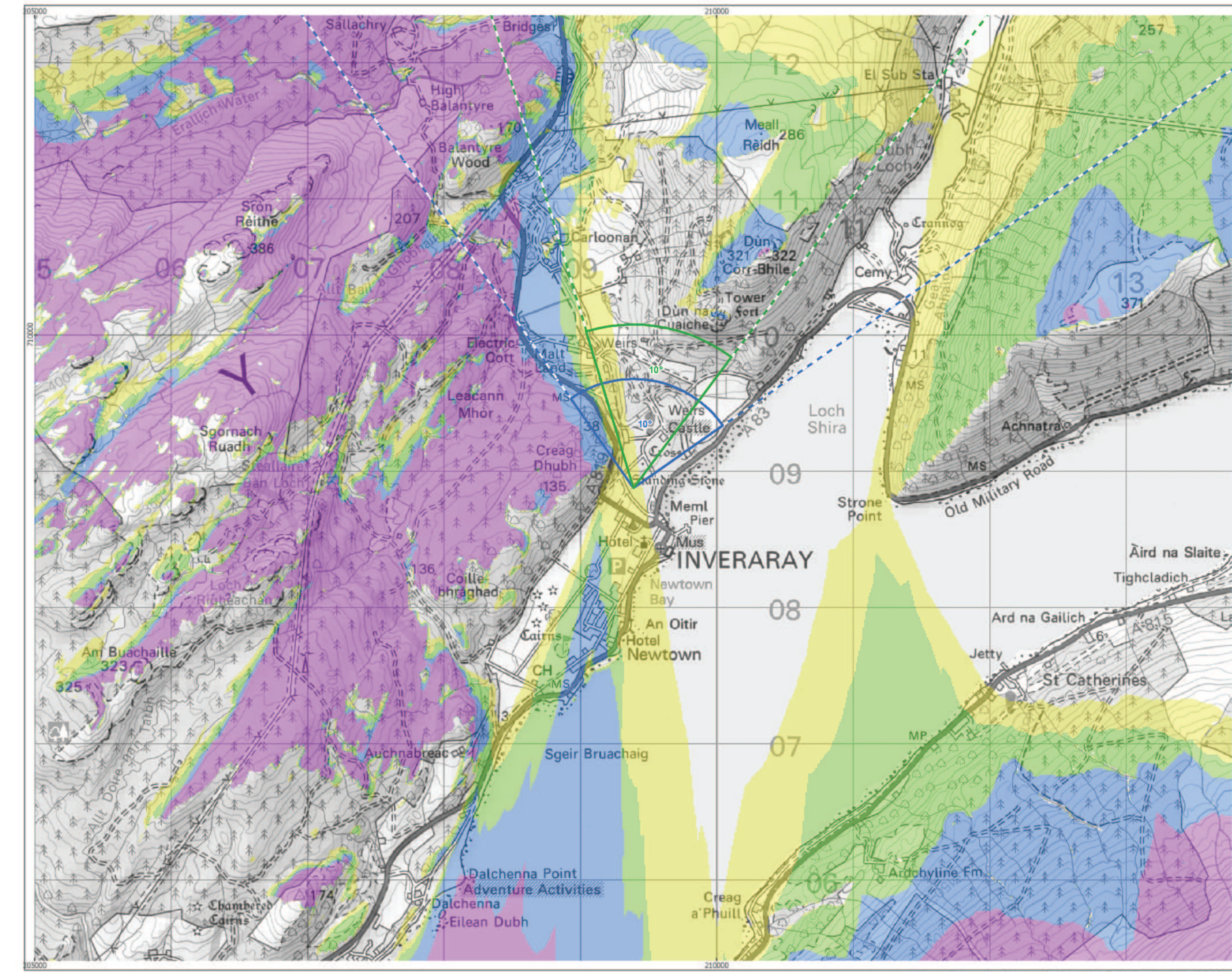


Cumulative Wind Farms and Location Plan 1:350,000 Scale



Viewpoint Location Plan with Horizontal Field of View 1:25,000 Scale

optimised environments  
PART OF SLR

- Proposed Turbines
- Site Boundary
- 10km Radii
- 45km Study Area
- Viewpoint

Cumulative Wind Farm Status

- Appeal/Application
- Consented
- Operational
- Under Construction

- Scoping Boundaries
- Photomontage and Wireline
- No. of Blade Tips Theoretically

Blade tip: 180m	Observer height: 2m
DTM: OS T5/T50 DTM	Surface features: Excluded
DTM resolution: 10m	Earth curvature: Included

1:350,000 Scale @ A3

0 2 4 6 8 10 km

Produced By: NL

Ref:

Checked By: JP

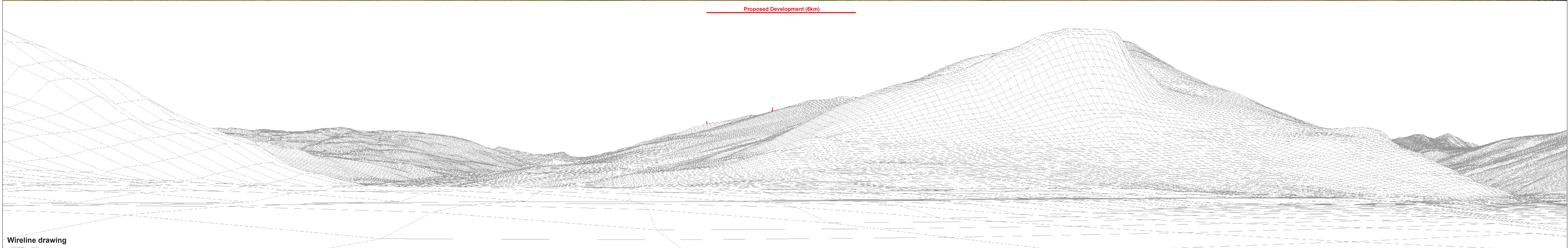
Date: 26/09/2023

**Viewpoint Plan**  
Figure 6.28a  
Viewpoint 5:  
Inveraray Castle

**Ladyfield Renewable Energy Park**  
LVIA

Reproduced from Ordnance Survey digital map data © Crown copyright and database right 2023. All rights reserved. License number 010001673.  
 P:\2020\201532\_Ladyfield\GIS\201532\_LF\WP\LVIA\201532\_LF\WP\_LVIA\_VP\_plan.mxd

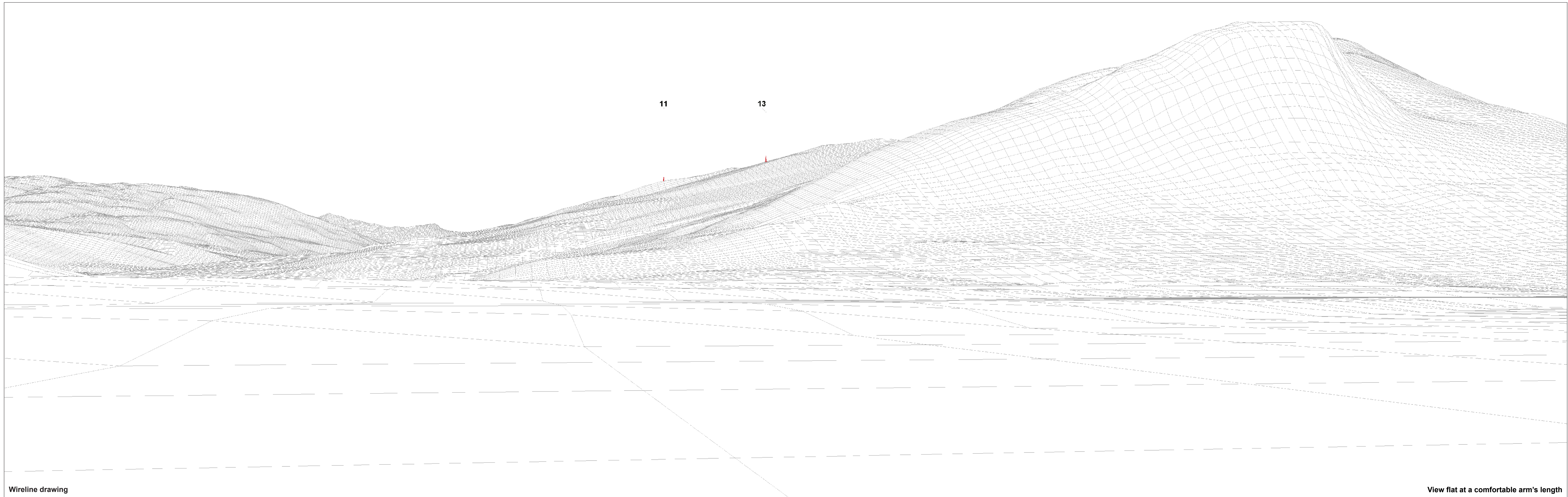




<b>OS reference:</b> 209388 E 708876 N	<b>Horizontal field of view:</b> 90° (cylindrical projection)	<b>Camera:</b> Canon EOS 5D Mark II
<b>Eye level:</b> 11.5 mAOD	<b>Principal distance:</b> 522 mm	<b>Lens:</b> Canon EF 50mm f/1.4
<b>Direction of view:</b> 10°	<b>Paper size:</b> 841 x 297 mm (half A1)	<b>Camera height:</b> 1.5 m
<b>Nearest turbine:</b> 6.00 km	<b>Correct printed image size:</b> 820 x 130 mm	<b>Date and time:</b> 22/07/2021 10:22

**Figure 6.28b**  
Viewpoint 5: Inveraray Castle  
Ladyfield Renewable Energy Park  
© Crown copyright and database rights (2023) Ordnance Survey 0100031673.





Wireline drawing

View flat at a comfortable arm's length

OS reference: 209388 E 708876 N  
 Eye level: 11.5 mAOD  
 Direction of view: 10°  
 Nearest turbine: 6.00 km

Horizontal field of view: 53.5° (planar projection)  
 Principal distance: 812.5 mm  
 Paper size: 841 x 297 mm (half A1)  
 Correct printed image size: 820 x 260 mm

Camera: Canon EOS 5D Mark II  
 Lens: Canon EF 50mm f/1.4  
 Camera height: 1.5 m  
 Date and time: 22/07/2021 10:22





Photomontage: Proposed Development

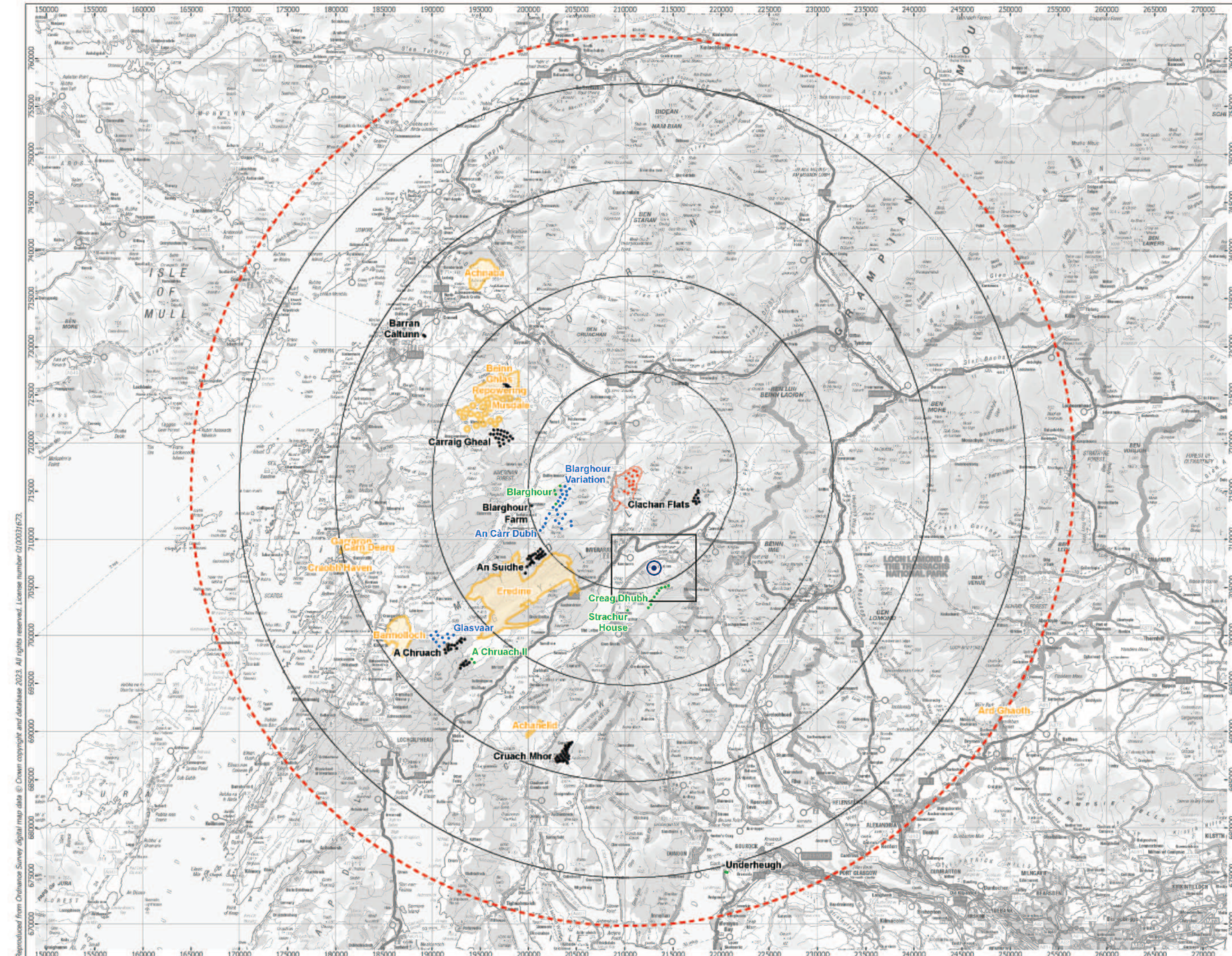
View flat at a comfortable arm's length

**OS reference:** 209388 E 708876 N  
**Eye level:** 11.5 mAOD  
**Direction of view:** 10°  
**Nearest turbine:** 6.00 km

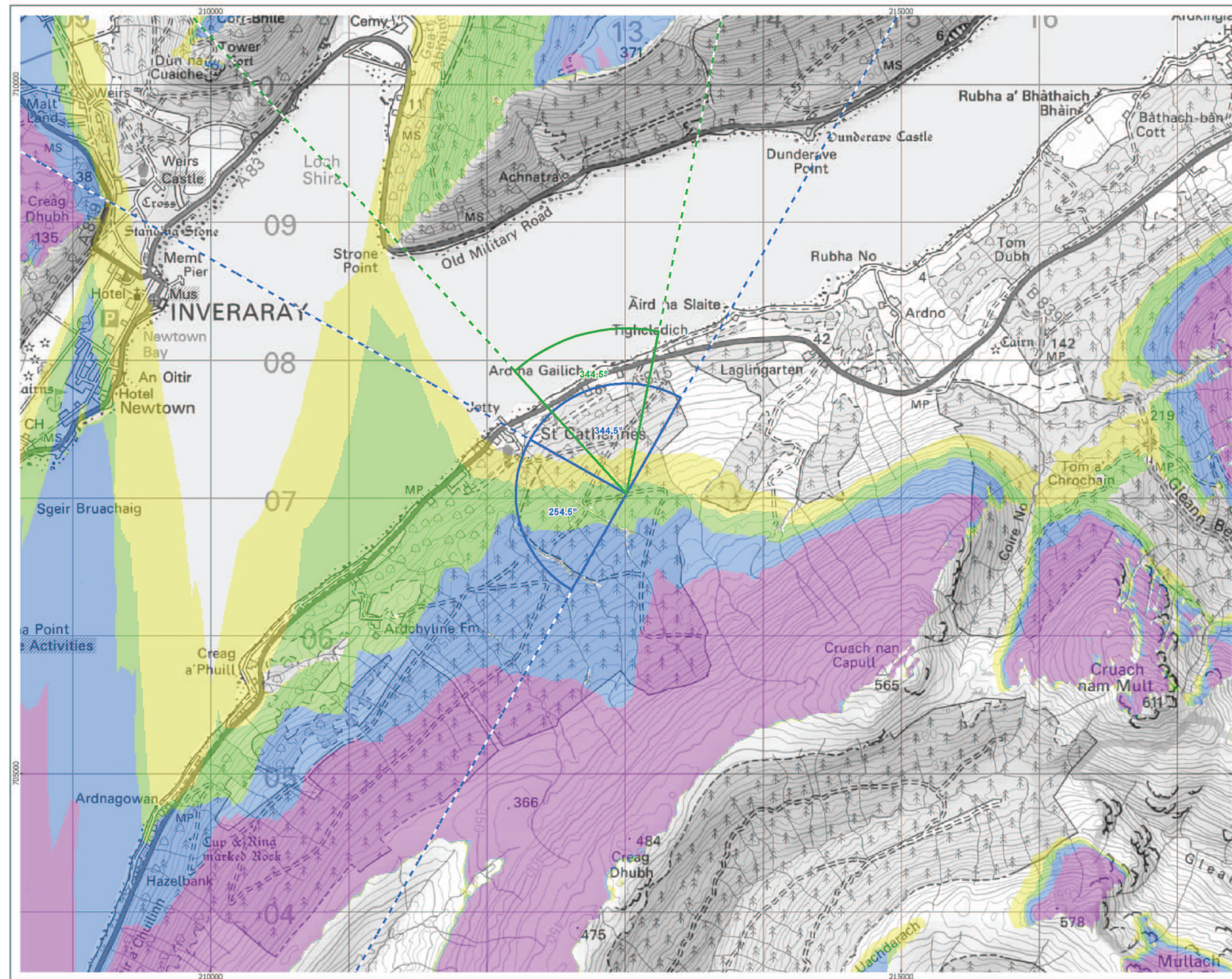
**Horizontal field of view:** 53.5° (planar projection)  
**Principal distance:** 812.5 mm  
**Paper size:** 841 x 297 mm (half A1)  
**Correct printed image size:** 820 x 260 mm

**Camera:** Canon EOS 5D Mark II  
**Lens:** Canon EF 50mm f/1.4  
**Camera height:** 1.5 m  
**Date and time:** 22/07/2021 10:22





Cumulative Wind Farms and Location Plan 1:350,000 Scale



Viewpoint Location Plan with Horizontal Field of View 1:25,000 Scale

**open**  
optimised environments  
PART OF SLR

**ERM**

- Proposed Turbines
- Site Boundary
- 10km Radii
- 45km Study Area
- Viewpoint

**Cumulative Wind Farm Status**

- Appeal/Application
- Consented
- Operational
- Under Construction

**Scoping Boundaries**

- Photomontage and Wireline

**No. of Blade Tips Theoretically**

- 0-100
- 100-200
- 200-300
- 300-400
- 400-500
- 500-600
- 600-700
- 700-800
- 800-900
- 900-1000
- 1000+

Blade tip: 180m    Observer height: 2m  
 DTM: OS T5/T50 DTM    Surface features: Excluded  
 DTM resolution: 10m    Earth curvature: Included

1:350,000 Scale @ A3  
 0 2 4 6 8 10 km

Produced By: NL    Ref:  
 Checked By: JP    Date: 26/09/2023

**Viewpoint Plan**  
 Figure 6.29a  
 Viewpoint 6:  
 Forest Track above St Catherine's

**Ladyfield Renewable Energy Park**  
 LVIA

Reproduced from Ordnance Survey digital map data © Crown copyright and database right 2023. All rights reserved. License number 010001673.  
 P:\2020\201532\_Ladyfield\GIS\201532\_LF\WP\LVIA\201532\_LF\WP\_LVIA\_VP\_plan.mxd