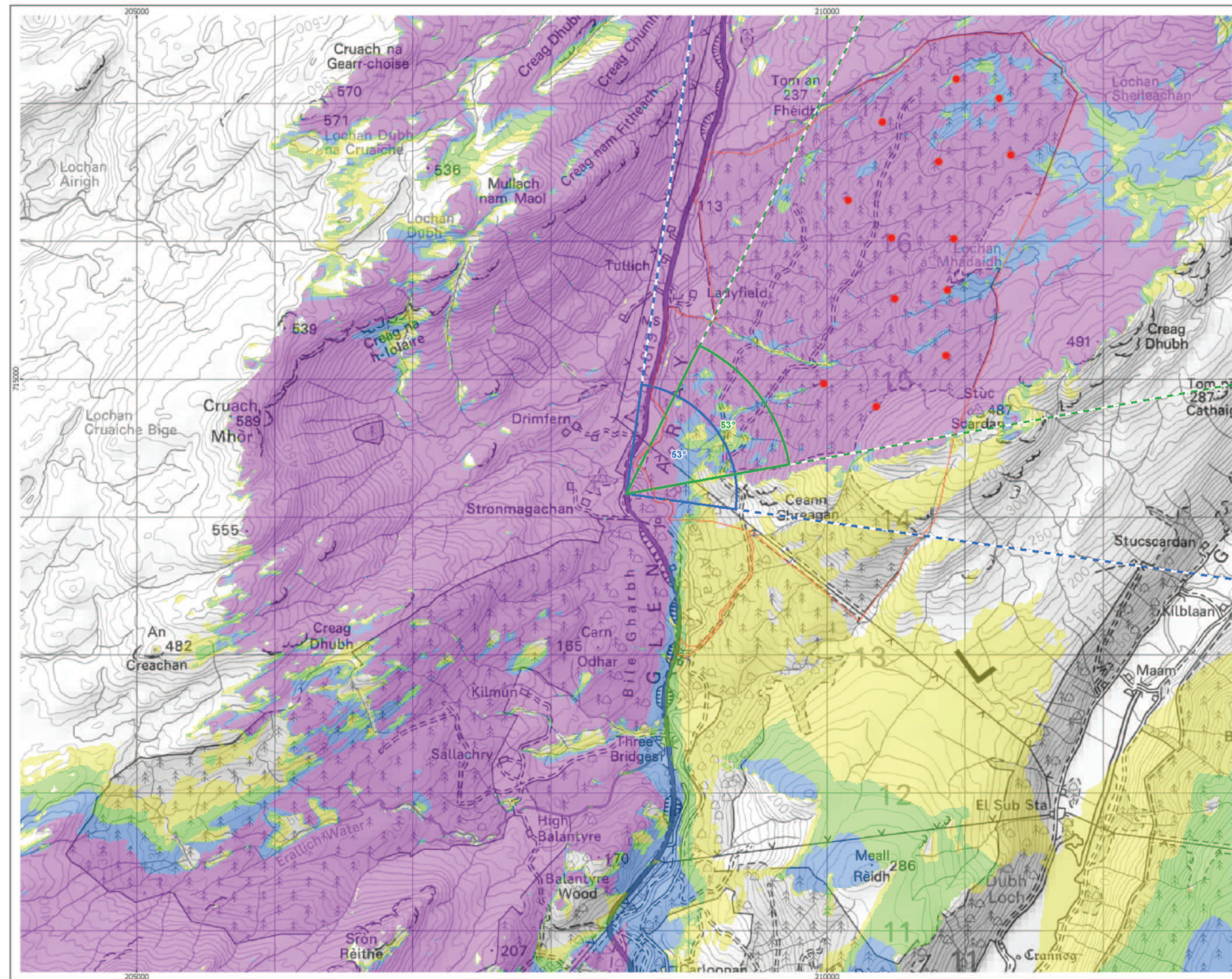


Cumulative Wind Farms and Location Plan 1:350,000 Scale



Viewpoint Location Plan with Horizontal Field of View 1:25,000 Scale

open
optimised environments
PART OF SLR

- Proposed Turbines
- Site Boundary
- 10km Radii
- 45km Study Area
- Viewpoint

Cumulative Wind Farm Status

- Appeal/Application
- Consented
- Operational
- Under Construction

Scoping Boundaries

- Photomontage and Wireline

No. of Blade Tips Theoretically

- Yellow
- Light Green
- Dark Green
- Blue
- Purple

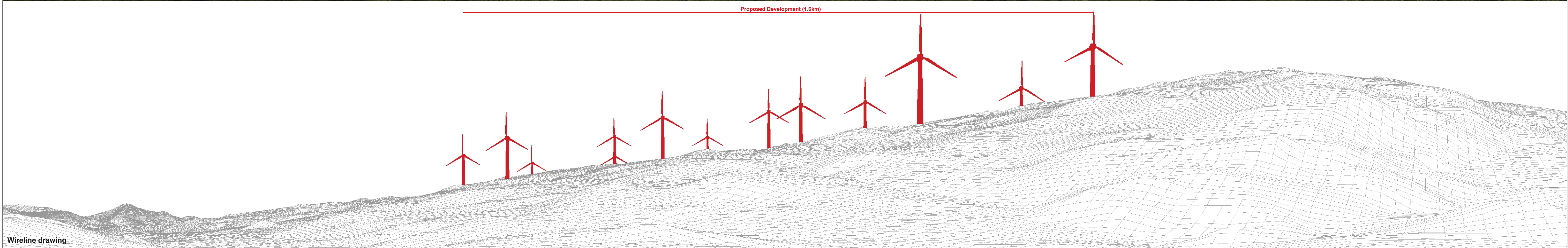
Blade tip: 180m Observer height: 2m
 DTM: OS T5/T50 DTM Surface features: Excluded
 DTM resolution: 10m Earth curvature: Included

1:350,000 Scale @ A3
 0 2 4 6 8 10 km

Produced By: NL Ref:
 Checked By: JP Date: 26/09/2023

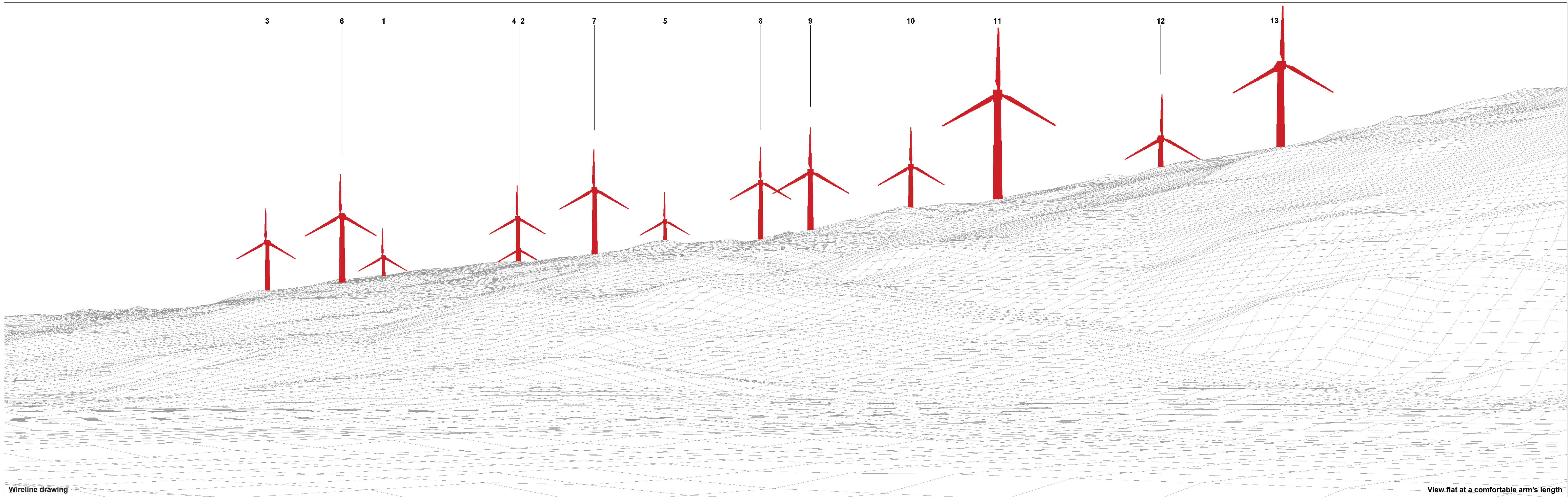
Viewpoint Plan
 Figure 6.26a
 Viewpoint 3:
 A819, north of Inveraray

Ladyfield Renewable Energy Park
 LVIA



OS reference: 208546 E 714168 N	Horizontal field of view: 90° (cylindrical projection)	Camera: Canon EOS 5D Mark II
Eye level: 89.0 mAOD	Principal distance: 522 mm	Lens: Canon EF 50mm f/1.4
Direction of view: 53°	Paper size: 841 x 297 mm (half A1)	Camera height: 1.5 m
Nearest turbine: 1.64 km	Correct printed image size: 820 x 130 mm	Date and time: 22/07/2021 14:27

Figure 6.26b
 Viewpoint 3: A819, north of Inveraray
 Ladyfield Renewable Energy Park
© Crown copyright and database rights (2023) Ordnance Survey 0100031673.



Wireline drawing

View flat at a comfortable arm's length

OS reference: 208546 E 714168 N
 Eye level: 89.0 mAOD
 Direction of view: 53°
 Nearest turbine: 1.64 km

Horizontal field of view: 53.5° (planar projection)
 Principal distance: 812.5 mm
 Paper size: 841 x 297 mm (half A1)
 Correct printed image size: 820 x 260 mm

Camera: Canon EOS 5D Mark II
 Lens: Canon EF 50mm f/1.4
 Camera height: 1.5 m
 Date and time: 22/07/2021 14:27

Figure 6.26c
 Viewpoint 3: A819, north of Inveraray
 Ladyfield Renewable Energy Park
 © Crown copyright and database rights (2023) Ordnance Survey 0100031673.



Photomontage: Proposed Development

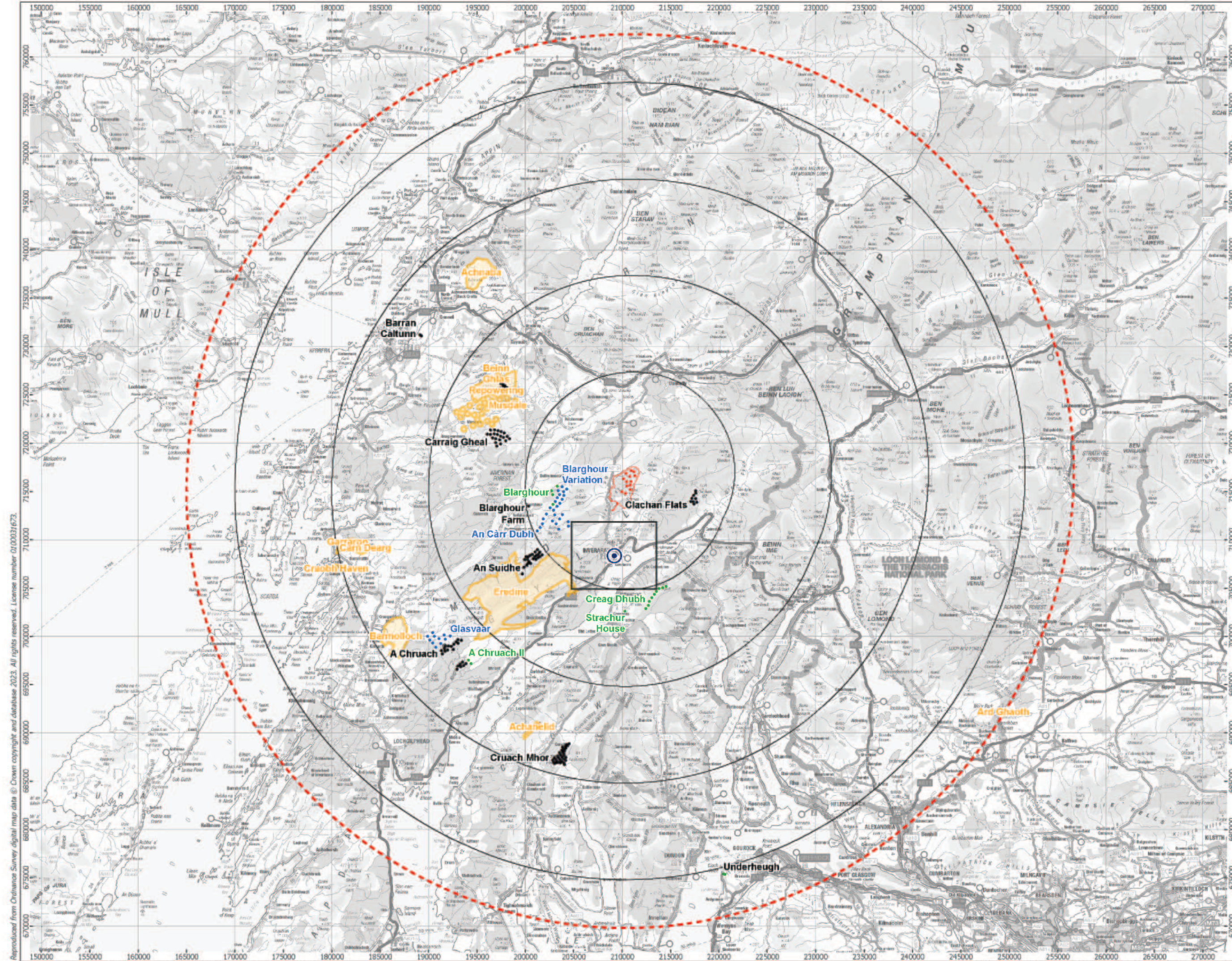
View flat at a comfortable arm's length

OS reference: 208546 E 714168 N
Eye level: 89.0 mAOD
Direction of view: 53°
Nearest turbine: 1.64 km

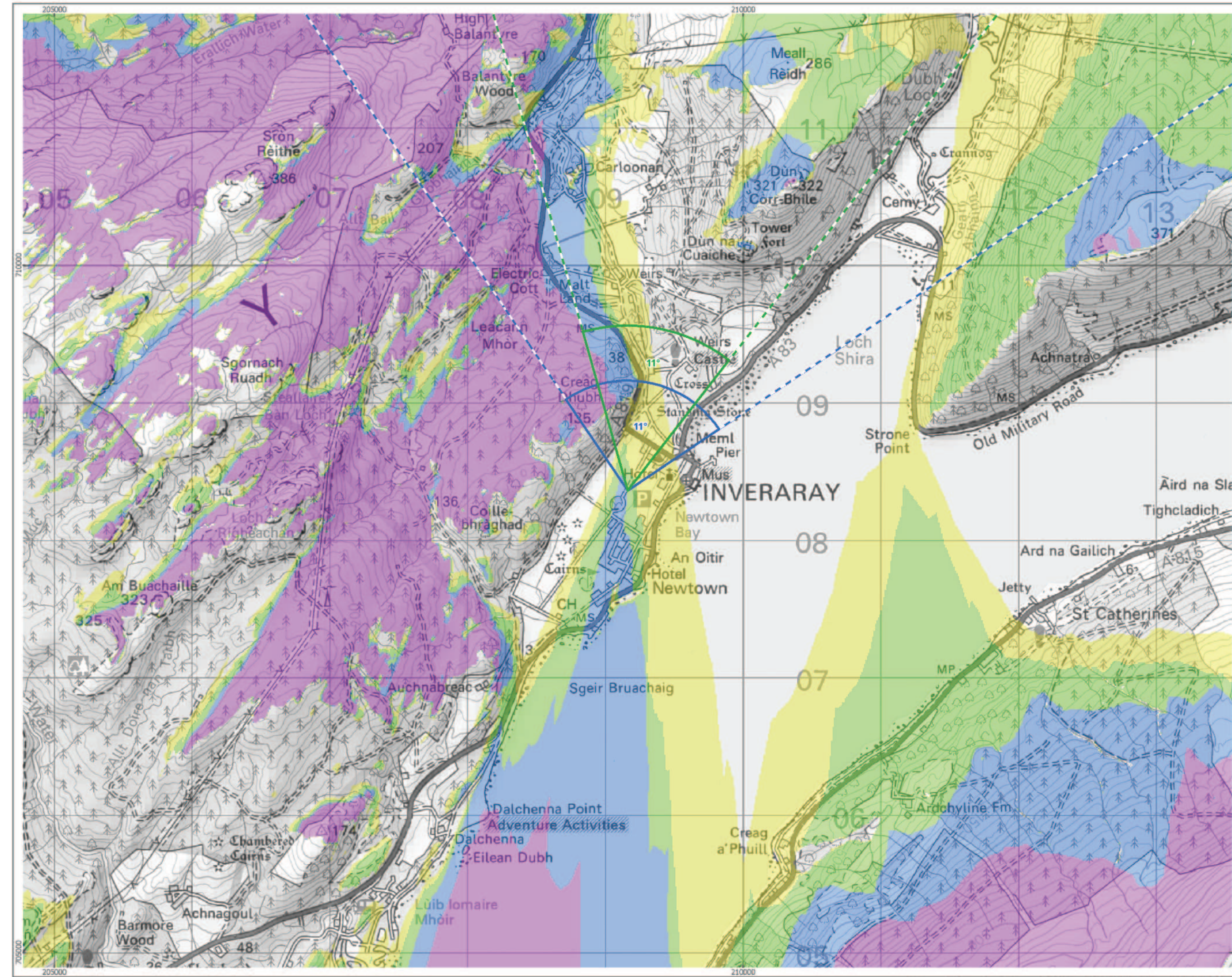
Horizontal field of view: 53.5° (planar projection)
Principal distance: 812.5 mm
Paper size: 841 x 297 mm (half A1)
Correct printed image size: 820 x 260 mm

Camera: Canon EOS 5D Mark II
Lens: Canon EF 50mm f/1.4
Camera height: 1.5 m
Date and time: 22/07/2021 14:27

Figure 6.26d
Viewpoint 3: A819, north of Inveraray
Ladyfield Renewable Energy Park
© Crown copyright and database rights (2023) Ordnance Survey 0100031673.



Cumulative Wind Farms and Location Plan 1:350,000 Scale



Viewpoint Location Plan with Horizontal Field of View 1:25,000 Scale

open
optimised environments
PART OF SLR

ERM

- Proposed Turbines
- Site Boundary
- 10km Radii
- 45km Study Area
- Viewpoint

Cumulative Wind Farm Status

- Appeal/Application
- Consented
- Operational
- Under Construction

- Scoping Boundaries
- Photomontage and Wireline

No. of Blade Tips Theoretically

- 0-10
- 11-20
- 21-30
- 31-40
- 41-50
- 51-60
- 61-70
- 71-80
- 81-90
- 91-100
- 101-110
- 111-120
- 121-130
- 131-140
- 141-150
- 151-160
- 161-170
- 171-180
- 181-190
- 191-200
- 201-210
- 211-220
- 221-230
- 231-240
- 241-250
- 251-260
- 261-270
- 271-280
- 281-290
- 291-300
- 301-310
- 311-320
- 321-330
- 331-340
- 341-350
- 351-360
- 361-370
- 371-380
- 381-390
- 391-400
- 401-410
- 411-420
- 421-430
- 431-440
- 441-450
- 451-460
- 461-470
- 471-480
- 481-490
- 491-500
- 501-510
- 511-520
- 521-530
- 531-540
- 541-550
- 551-560
- 561-570
- 571-580
- 581-590
- 591-600
- 601-610
- 611-620
- 621-630
- 631-640
- 641-650
- 651-660
- 661-670
- 671-680
- 681-690
- 691-700
- 701-710
- 711-720
- 721-730
- 731-740
- 741-750
- 751-760
- 761-770
- 771-780
- 781-790
- 791-800
- 801-810
- 811-820
- 821-830
- 831-840
- 841-850
- 851-860
- 861-870
- 871-880
- 881-890
- 891-900
- 901-910
- 911-920
- 921-930
- 931-940
- 941-950
- 951-960
- 961-970
- 971-980
- 981-990
- 991-1000

Blade tip: 180m
Observer height: 2m
DTM: OS TS/TSO DTM
Surface features: Excluded
DTM resolution: 10m
Earth curvature: Included

1:350,000 Scale @ A3
0 2 4 6 8 10 km

Produced By: NL
Checked By: JP
Ref:
Date: 26/09/2023

Viewpoint Plan
Figure 6.27a
Viewpoint 4:
Track above Inveraray

Ladyfield Renewable Energy Park
LVIA

Reproduced from Ordnance Survey digital map data © Crown copyright and database right 2023. All rights reserved. License number 0100016763.
 P:\2020\201532_Ladyfield\GIS\201532_LF\WP\LVIA\201532_LF\DW\LVIA_VP_plan.mxd