



Photomontage: Proposed Development with 2000cd Aviation Lighting

View flat at a comfortable arm's length

<b>OS reference:</b>	209340 E 718010 N	<b>Horizontal field of view:</b>	53.5° (planar projection)	<b>Camera:</b>	Canon EOS 6D
<b>Eye level:</b>	148.5 mAOD	<b>Principal distance:</b>	812.5 mm	<b>Lens:</b>	Canon EF 50mm f/1.4
<b>Direction of view:</b>	118.5°	<b>Paper size:</b>	841 x 297 mm (half A1)	<b>Camera height:</b>	1.5 m
<b>Nearest turbine:</b>	1.56 km	<b>Correct printed image size:</b>	820 x 260 mm	<b>Date and time:</b>	21/04/2022 20:04

Figure 6.24g  
Viewpoint 1: A819, Dorchaidean Eoin Ruadh-bhuidhe  
Ladyfield Renewable Energy Park  
© Crown copyright and database rights (2023) Ordnance Survey 0100031673.





Photomontage: Proposed Development with 2000cd Aviation Lighting

View flat at a comfortable arm's length

<b>OS reference:</b>	209340 E 718010 N	<b>Horizontal field of view:</b>	53.5° (planar projection)	<b>Camera:</b>	Canon EOS 6D
<b>Eye level:</b>	148.5 mAOD	<b>Principal distance:</b>	812.5 mm	<b>Lens:</b>	Canon EF 50mm f/1.4
<b>Direction of view:</b>	172°	<b>Paper size:</b>	841 x 297 mm (half A1)	<b>Camera height:</b>	1.5 m
<b>Nearest turbine:</b>	1.56 km	<b>Correct printed image size:</b>	820 x 260 mm	<b>Date and time:</b>	21/04/2022 20:04

Figure 6.24h  
Viewpoint 1: A819, Dorchaidean Eoin Ruadh-bhuidhe  
Ladyfield Renewable Energy Park  
© Crown copyright and database rights (2023) Ordnance Survey 0100031673.





Photomontage: Proposed Development with 200cd Aviation Lighting

View flat at a comfortable arm's length

<b>OS reference:</b> 209340 E 718010 N	<b>Horizontal field of view:</b> 53.5° (planar projection)	<b>Camera:</b> Canon EOS 6D
<b>Eye level:</b> 148.5 mAOD	<b>Principal distance:</b> 812.5 mm	<b>Lens:</b> Canon EF 50mm f/1.4
<b>Direction of view:</b> 118.5°	<b>Paper size:</b> 841 x 297 mm (half A1)	<b>Camera height:</b> 1.5 m
<b>Nearest turbine:</b> 1.56 km	<b>Correct printed image size:</b> 820 x 260 mm	<b>Date and time:</b> 21/04/2022 20:04





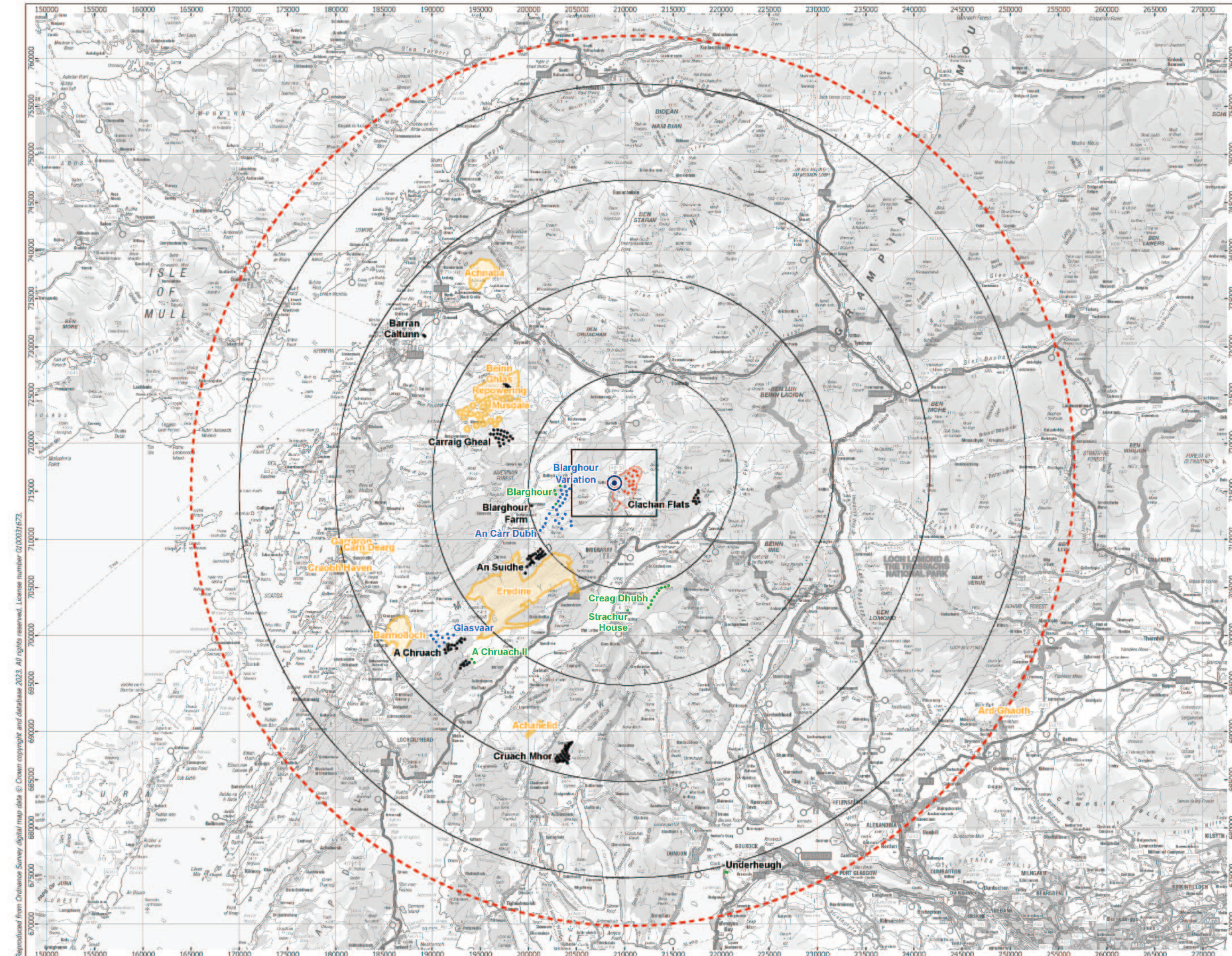
Photomontage: Proposed Development with 200cd Aviation Lighting

View flat at a comfortable arm's length

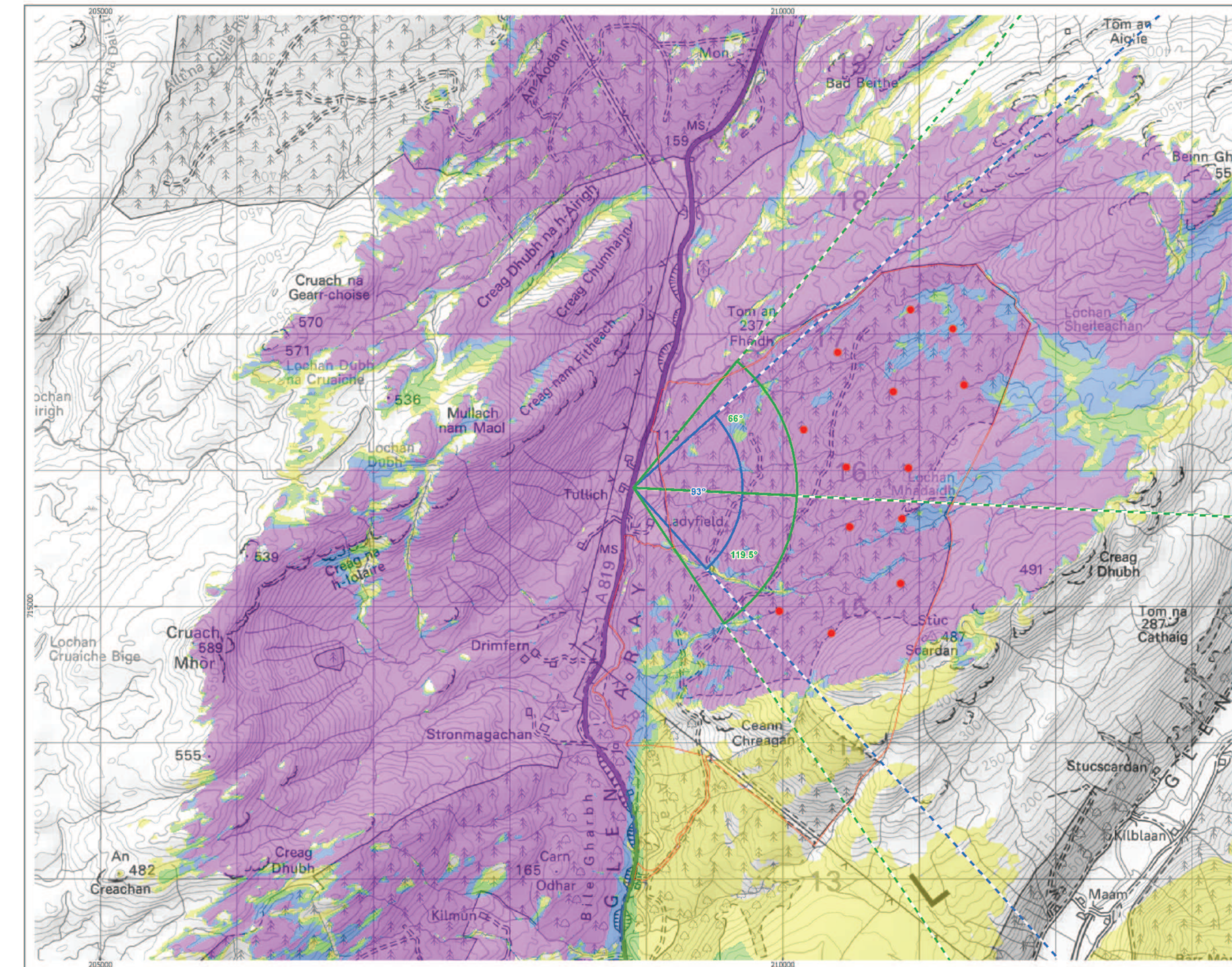
<b>OS reference:</b>	209340 E 718010 N	<b>Horizontal field of view:</b>	53.5° (planar projection)	<b>Camera:</b>	Canon EOS 6D
<b>Eye level:</b>	148.5 mAOD	<b>Principal distance:</b>	812.5 mm	<b>Lens:</b>	Canon EF 50mm f/1.4
<b>Direction of view:</b>	172°	<b>Paper size:</b>	841 x 297 mm (half A1)	<b>Camera height:</b>	1.5 m
<b>Nearest turbine:</b>	1.56 km	<b>Correct printed image size:</b>	820 x 260 mm	<b>Date and time:</b>	21/04/2022 20:04

Figure 6.24j  
Viewpoint 1: A819, Dorchaidean Eoin Ruadh-bhuidhe  
Ladyfield Renewable Energy Park  
© Crown copyright and database rights (2023) Ordnance Survey 0100031673.





Cumulative Wind Farms and Location Plan 1:350,000 Scale



Viewpoint Location Plan with Horizontal Field of View 1:25,000 Scale

**open**  
optimised environments  
PART OF SLR

**ERM**

- Proposed Turbines
- Site Boundary
- 10km Radii
- 45km Study Area
- Viewpoint

**Cumulative Wind Farm Status**

- Appeal/Application
- Consented
- Operational
- Under Construction

**Scoping Boundaries**

- Photomontage and Wireline

**No. of Blade Tips Theoretically**

- Yellow
- Light Green
- Blue
- Purple

Blade tip: 180m  
Observer height: 2m  
DTM: OS T5/T50 DTM  
Surface features: Excluded  
DTM resolution: 10m  
Earth curvature: Included

1:350,000 Scale @ A3  
0 2 4 6 8 10 km

Produced By: NL  
Checked By: JP  
Ref:  
Date: 26/09/2023

**Viewpoint Plan**  
Figure 6.25a  
Viewpoint 2:  
A819, Tullich

**Ladyfield Renewable Energy Park LVIA**

Reproduced from Ordnance Survey digital map data © Crown copyright and database right 2023. All rights reserved. License number 010001673.  
 P:\2020\201532\_Ladyfield\GIS\201532\_LF\WP\LVIA\201532\_LF\WP\_LVIA\_VP\_plan.mxd