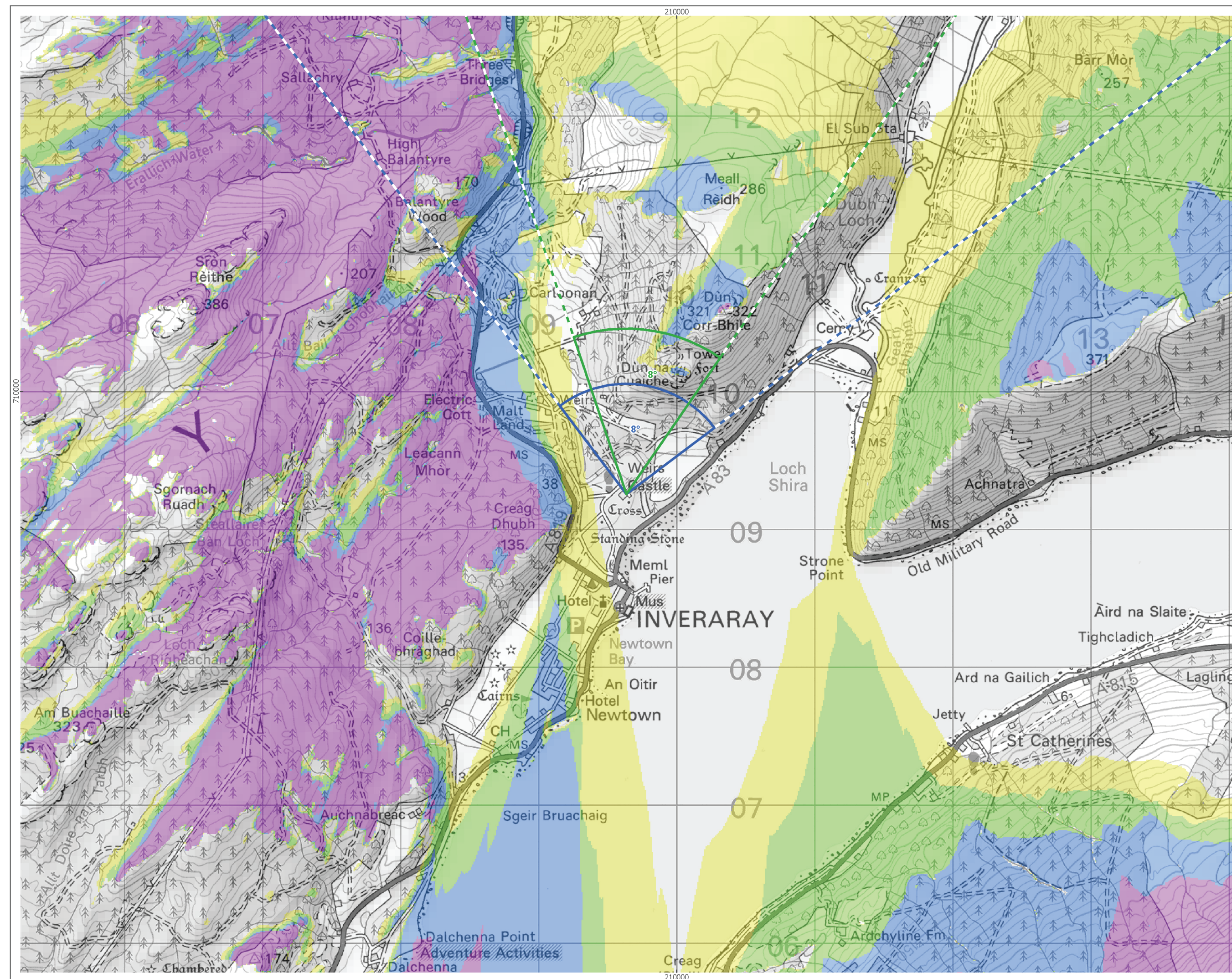


Cumulative Wind Farms and Location Plan 1:350,000 Scale



Viewpoint Location Plan with Horizontal Field of View 1:25,000 Scale

open
optimised environments
PART OF SLR

ERM

- Proposed Turbines
- Site Boundary
- 10km Radii
- 45km Study Area
- Viewpoint

Cumulative Wind Farm Status

- Appeal/Application
- Consented
- Operational
- Under Construction

Scoping Boundaries

- Photomontage and Wireline (53.5°HFOV)
- Panorama with Wireline (90°HFOV)

No. of Blade Tips Theoretically Visible

- 1 - 3
- 4 - 6
- 7 - 9
- 10 - 13

Blade tip:	180m	Observer height:	2m
DTM:	OS T5/T50 DTM	Surface features:	Excluded
DTM resolution:	10m	Earth curvature:	Included

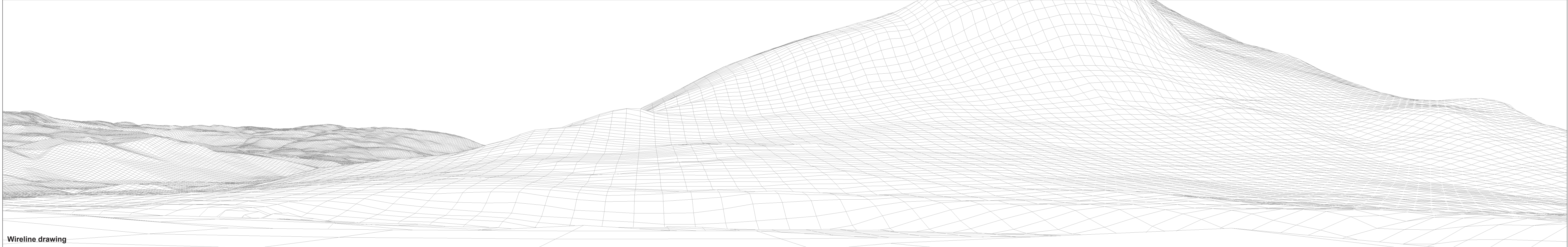
1:350,000 Scale @ A3
0 2 4 6 8 10 km

Produced By: NL Ref:
Checked By: JP Date: 26/09/2023

Viewpoint Plan
Figure 9.12a
Cultural Heritage Viewpoint 7:
Inveraray Castle (LB 11552)

Ladyfield Renewable Energy Park
LVIA

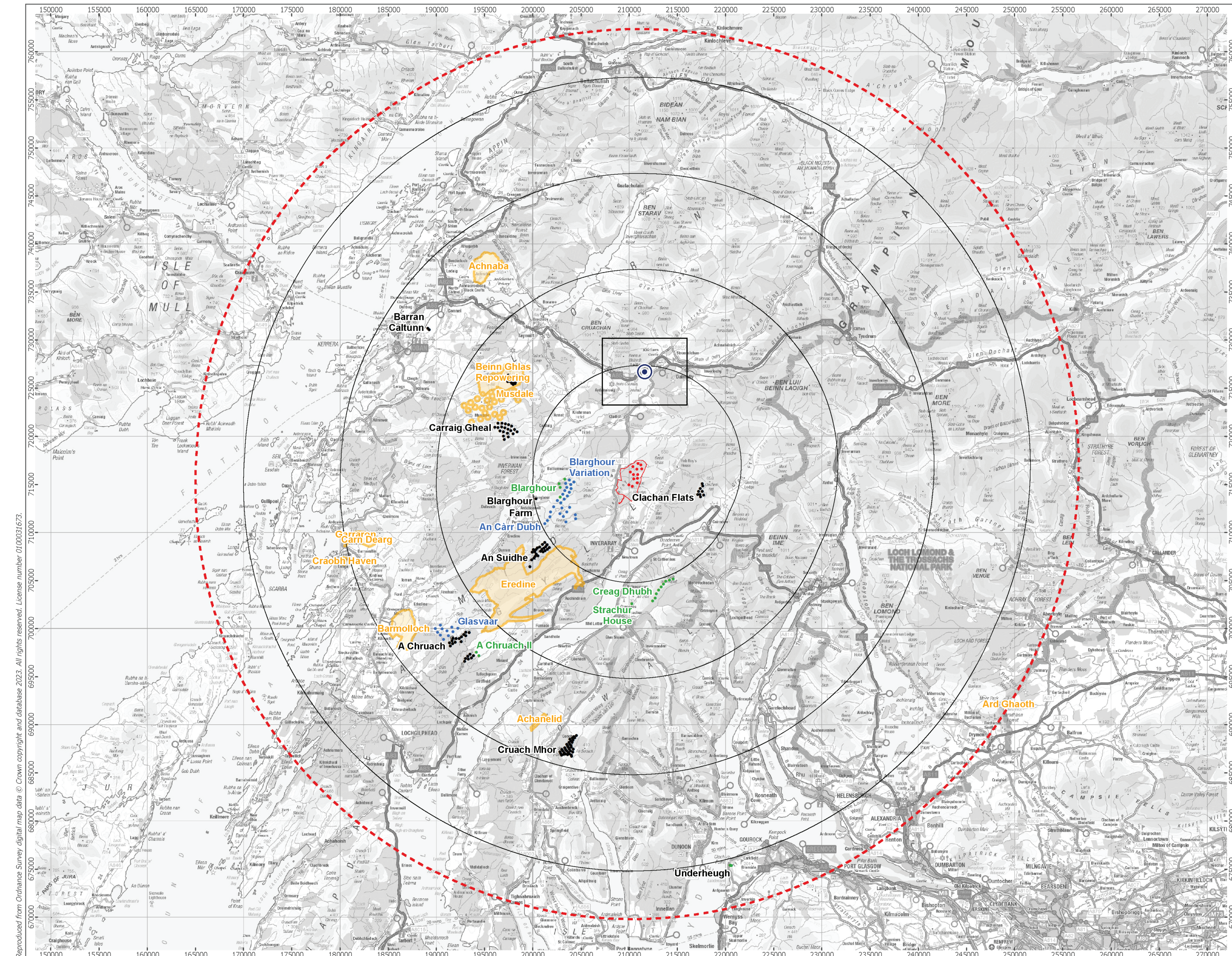
Reproduced from Ordnance Survey digital map data © Crown copyright and database 2023. All rights reserved. License number 010001672.
 P:\2020\201532_Ladyfield\GIS\201532_LFDWF\LVIA\201532_LFDWF_LVIA_VP_CH_plan.mxd



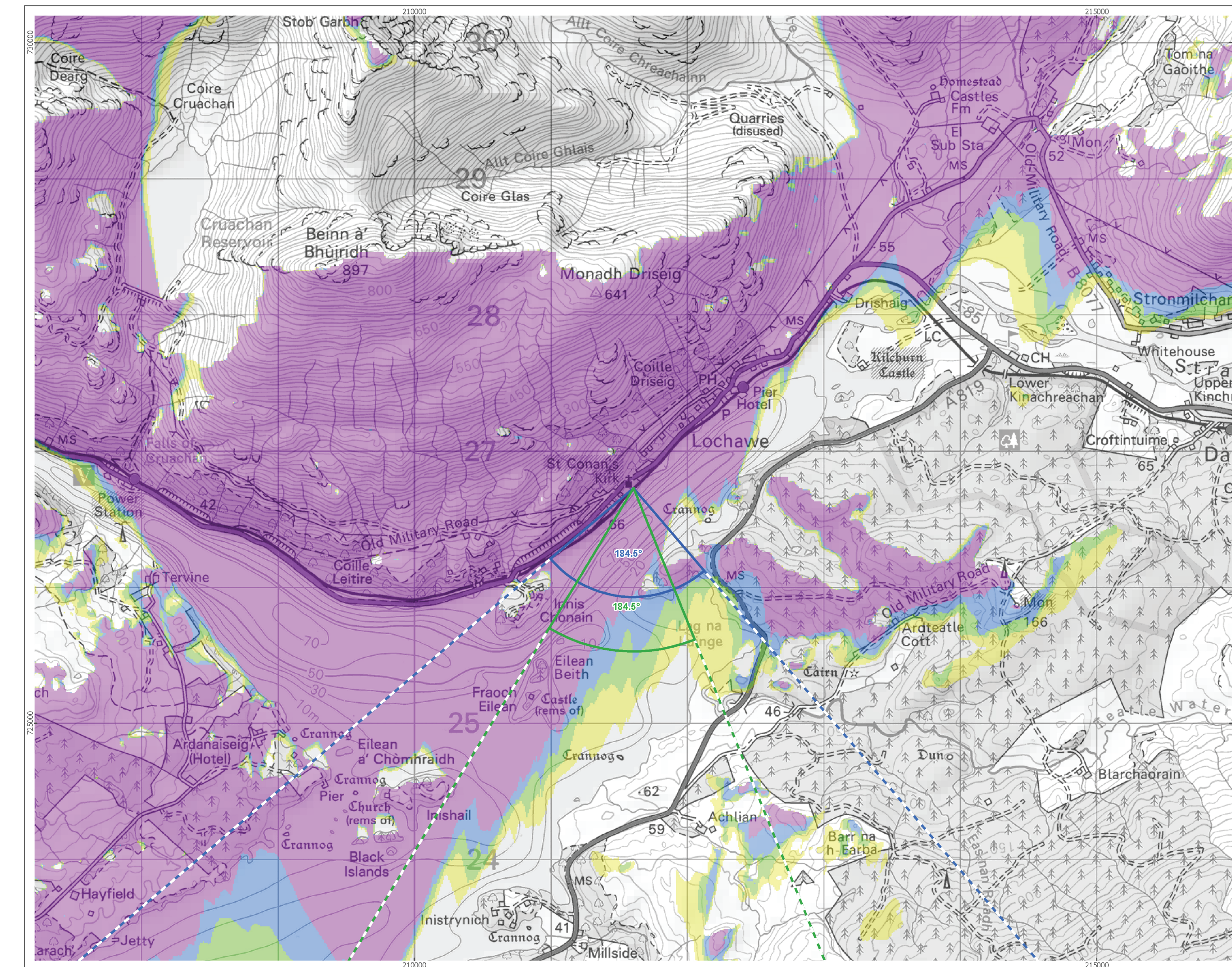
OS reference: 209634 E 709256 N
 Eye level: 14.5 mAOD
 Direction of view: 8°
 Nearest turbine: 5.59 km

Horizontal field of view: 90° (cylindrical projection)
 Principal distance: 522 mm
 Paper size: 841 x 297 mm (half A1)
 Correct printed image size: 820 x 130 mm

Camera: Canon EOS 5D Mark II
 Lens: Canon EF 50mm f/1.4
 Camera height: 1.5 m
 Date and time: 15/04/2023 13:29



Cumulative Wind Farms and Location Plan 1:350,000 Scale



Viewpoint Location Plan with Horizontal Field of View 1:25,000 Scale

open
optimised environments
PART OF SLR

ERM

- Proposed Turbines
- Site Boundary
- 10km Radii
- 45km Study Area
- Viewpoint

Cumulative Wind Farm Status

- Appeal/Application
- Consented
- Operational
- Under Construction

Scoping Boundaries

- Photomontage and Wireline (53.5°HFOV)
- Panorama with Wireline (90°HFOV)

No. of Blade Tips Theoretically Visible

- 1 - 3
- 4 - 6
- 7 - 9
- 10 - 13

Blade tip:	180m	Observer height:	2m
DTM:	OS T5/T50 DTM	Surface features:	Excluded
DTM resolution:	10m	Earth curvature:	Included

1:350,000 Scale @ A3
0 2 4 6 8 10 km

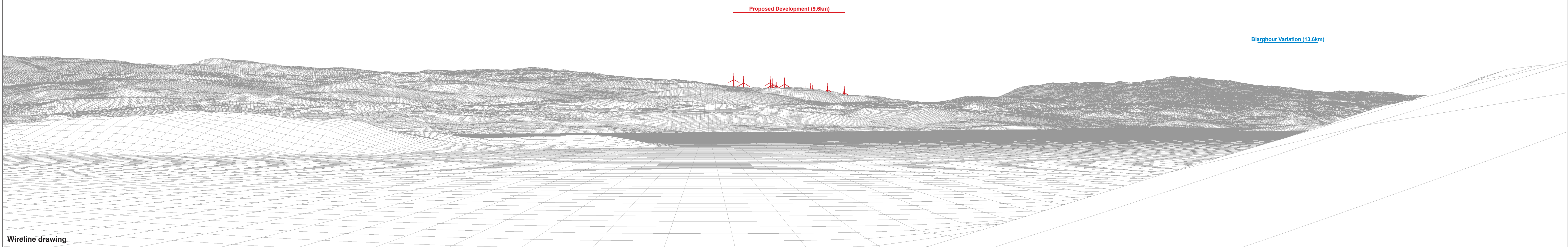
Produced By: NL Ref:
Checked By: JP Date: 26/09/2023

Viewpoint Plan
Figure 9.13a
Cultural Heritage Viewpoint 8:
St. Conan's Kirk

Ladyfield Renewable Energy Park
LVIA

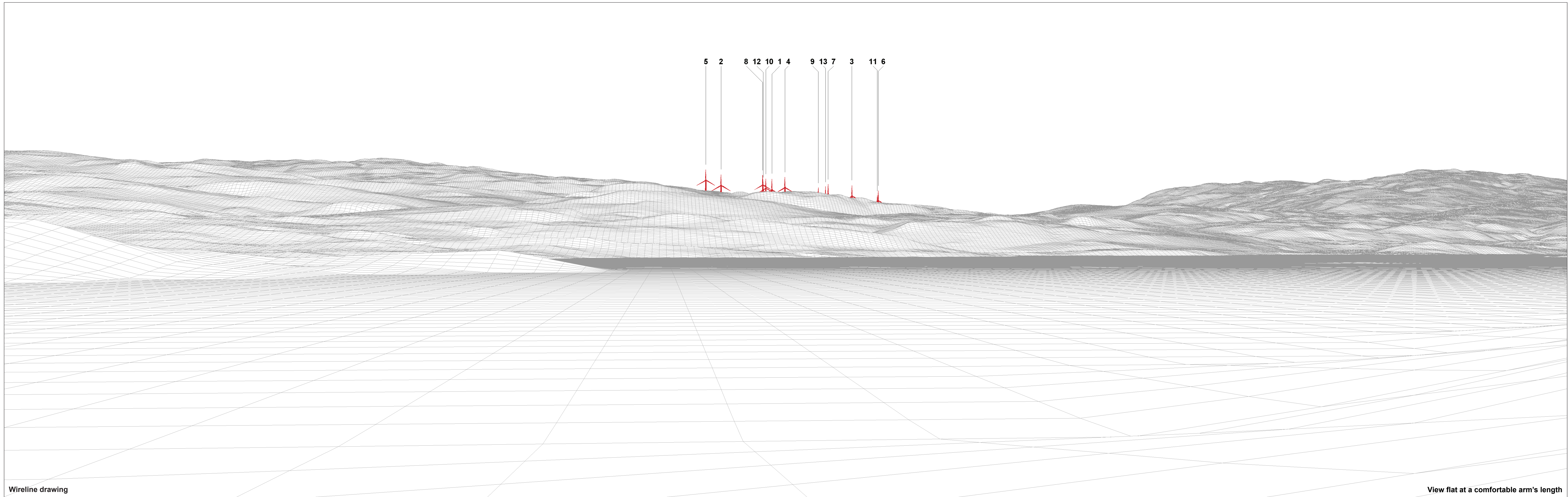
Reproduced from Ordnance Survey digital map data © Crown copyright and database 2023. All rights reserved. License number 0100031623.

P:\2020\201532_Ladyfield\GIS\201532_LFDWF\LVIA\201532_LFDWF_LVIA_VP_CH_plan.mxd



OS reference: 211604 E 726728 N	Horizontal field of view: 90° (cylindrical projection)	Camera: Canon EOS 6D Mark II
Eye level: 50.4 mAOD	Principal distance: 522 mm	Lens: Canon EF 50mm f/1.4
Direction of view: 184.5°	Paper size: 841 x 297 mm (half A1)	Camera height: 1.5 m
Nearest turbine: 9.57 km	Correct printed image size: 820 x 130 mm	Date and time: 08/04/2022 08:33

Figure 9.13b
 Viewpoint 8: St. Conan's Kirk
 Ladyfield Renewable Energy Park
 © Crown copyright and database rights (2023) Ordnance Survey 0100031673.



5 2 8 12 10 1 4 9 13 7 3 11 6

Wireline drawing

View flat at a comfortable arm's length

OS reference: 211604 E 726728 N
 Eye level: 50.4 mAOD
 Direction of view: 184.5°
 Nearest turbine: 9.57 km

Horizontal field of view: 53.5° (planar projection)
 Principal distance: 812.5 mm
 Paper size: 841 x 297 mm (half A1)
 Correct printed image size: 820 x 260 mm

Camera: Canon EOS 6D Mark II
 Lens: Canon EF 50mm f/1.4
 Camera height: 1.5 m
 Date and time: 08/04/2022 08:33