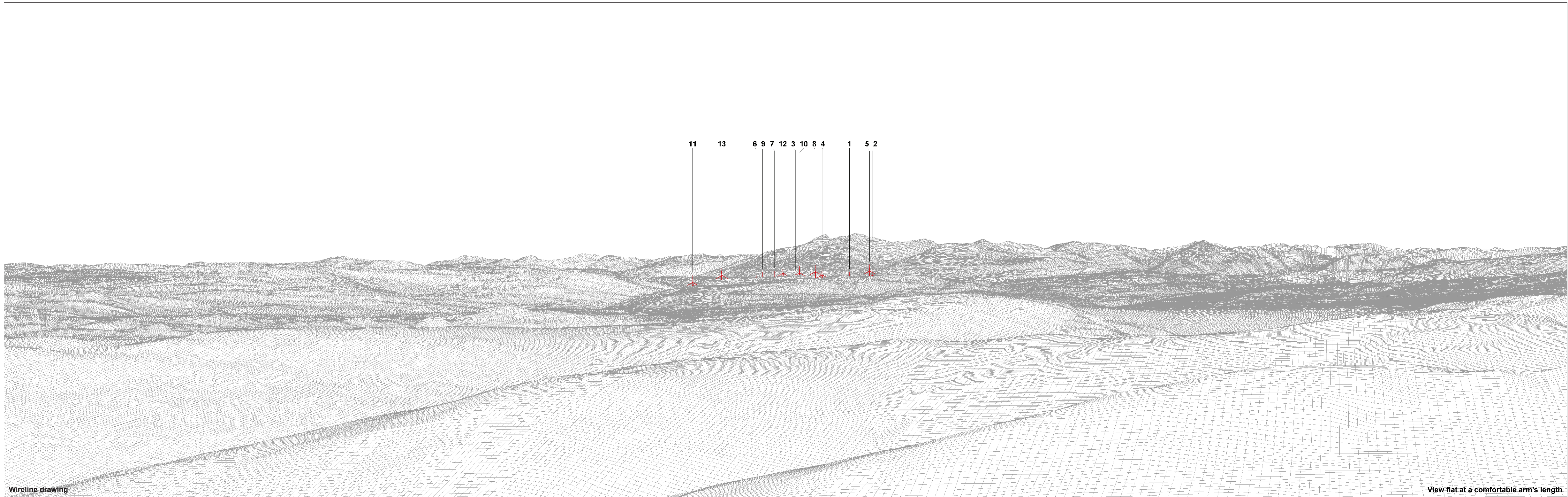


OS reference: 216035 E 700644 N
 Eye level: 701.5 mAOD
 Direction of view: 340.5°
 Nearest turbine: 15.25 km

Horizontal field of view: 90° (cylindrical projection)
 Principal distance: 522 mm
 Paper size: 841 x 297 mm (half A1)
 Correct printed image size: 820 x 130 mm

Camera: Canon EOS 6D Mark II
 Lens: Canon EF 50mm f/1.4
 Camera height: 1.5 m
 Date and time: 08/04/2022 14:12

Figure 6.39c
 Viewpoint 16: Beinn Lochain
 Ladyfield Renewable Energy Park
 © Crown copyright and database rights (2023) Ordnance Survey 0100031673.



Wireline drawing

View flat at a comfortable arm's length

OS reference: 216035 E 700644 N
 Eye level: 701.5 mAOD
 Direction of view: 340.5°
 Nearest turbine: 15.25 km

Horizontal field of view: 53.5° (planar projection)
 Principal distance: 812.5 mm
 Paper size: 841 x 297 mm (half A1)
 Correct printed image size: 820 x 260 mm

Camera: Canon EOS 6D Mark II
 Lens: Canon EF 50mm f/1.4
 Camera height: 1.5 m
 Date and time: 08/04/2022 14:12

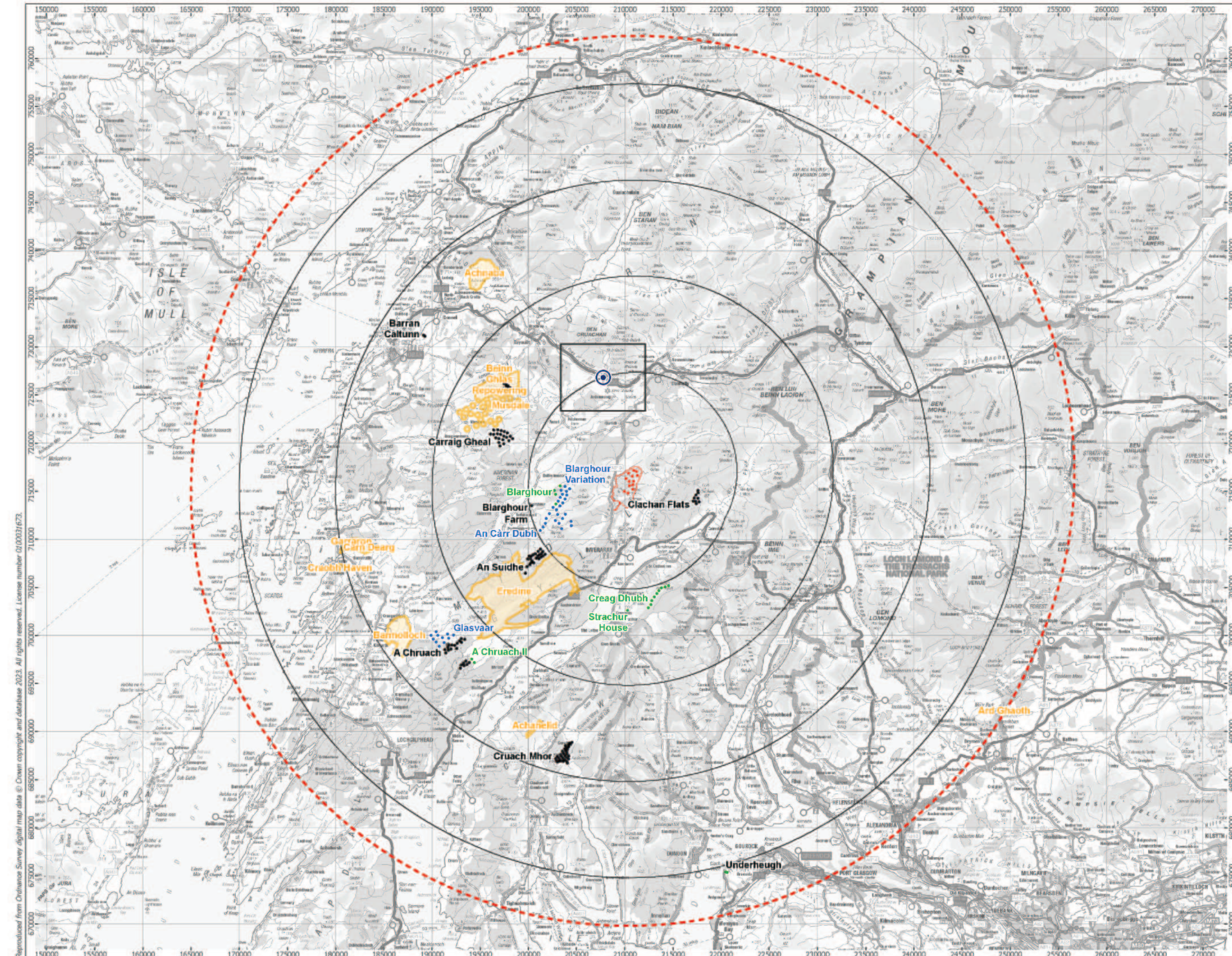


Photomontage: Proposed Development

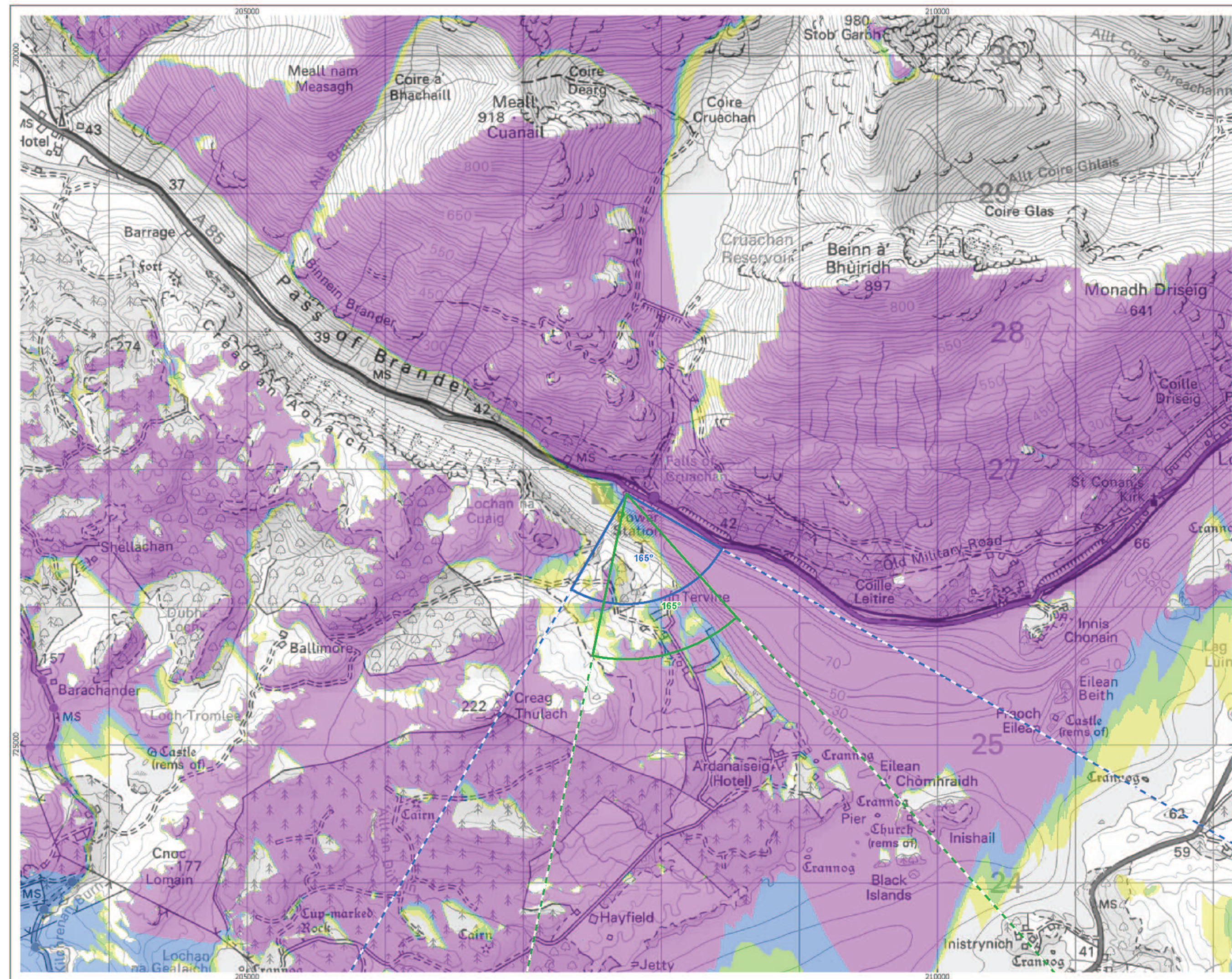
View flat at a comfortable arm's length

OS reference:	216035 E 700644 N	Horizontal field of view:	53.5° (planar projection)	Camera:	Canon EOS 6D Mark II
Eye level:	701.5 mAOD	Principal distance:	812.5 mm	Lens:	Canon EF 50mm f/1.4
Direction of view:	340.5°	Paper size:	841 x 297 mm (half A1)	Camera height:	1.5 m
Nearest turbine:	15.25 km	Correct printed image size:	820 x 260 mm	Date and time:	08/04/2022 14:12

Figure 6.39e
Viewpoint 16: Beinn Lochain
Ladyfield Renewable Energy Park
© Crown copyright and database rights (2023) Ordnance Survey 0100031673.



Cumulative Wind Farms and Location Plan 1:350,000 Scale



Viewpoint Location Plan with Horizontal Field of View 1:25,000 Scale

- Proposed Turbines
- Site Boundary
- 10km Radii
- 45km Study Area
- ⊙ Viewpoint

Cumulative Wind Farm Status

- Appeal/Application
- Consented
- Operational
- Under Construction

Scoping Boundaries

- Scoping Boundaries
- Photomontage and Wireline
- Photomontage and Wireline

No. of Blade Tips Theoretically

--	--	--	--

Blade tip: 180m	Observer height: 2m
DTM: OS T5/T50 DTM	Surface features: Excluded
DTM resolution: 10m	Earth curvature: Included

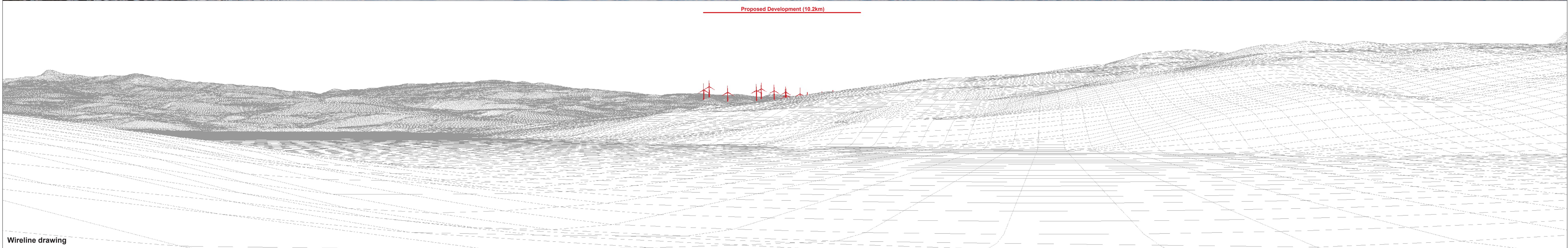
1:350,000 Scale @ A3

Produced By: NL	Ref:
Checked By: JP	Date: 26/09/2023

Viewpoint Plan
Figure 6.40a
Viewpoint 17:
Cruachan Power Station Visitor Centre

**Ladyfield Renewable Energy Park
LVIA**

Reproduced from Ordnance Survey digital map data © Crown copyright and database right 2023. All rights reserved. License number 0100021673.
 P:\2020\201532_Ladyfield\GIS\201532_LFDP\LVIA\201532_LFDP_VP_plan.mxd



OS reference: 207747 E 726821 N	Horizontal field of view: 90° (cylindrical projection)	Camera: Canon EOS 6D Mark II
Eye level: 40.5 mAOD	Principal distance: 522 mm	Lens: Canon EF 50mm f/1.4
Direction of view: 165°	Paper size: 841 x 297 mm (half A1)	Camera height: 1.5 m
Nearest turbine: 10.16 km	Correct printed image size: 820 x 130 mm	Date and time: 08/04/2022 10:10

Figure 6.40b
Viewpoint 17: Cruachan Power Station Visitor Centre
Ladyfield Renewable Energy Park
© Crown copyright and database rights (2023) Ordnance Survey 0100031673.