

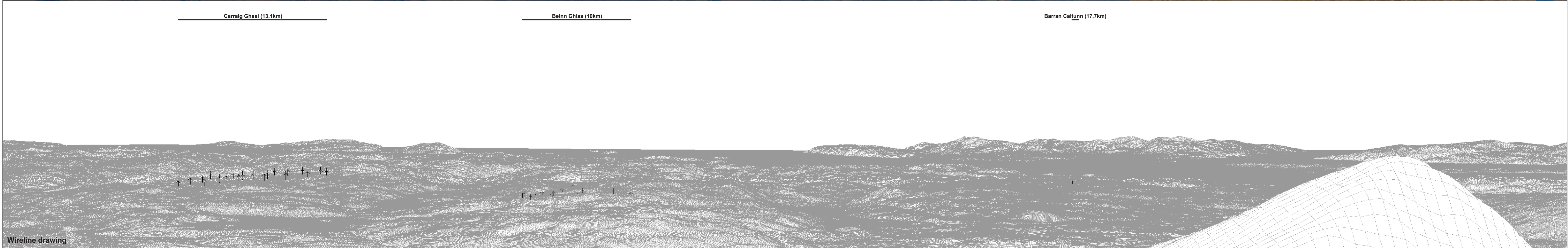
OS reference: 206960 E 730468 N	Horizontal field of view: 90° (cylindrical projection)	Camera: Canon EOS 5D Mark II
Eye level: 1127.1 mAOD	Principal distance: 522 mm	Lens: Canon EF 50mm f/1.4
Direction of view: 165.5°	Paper size: 841 x 297 mm (half A1)	Camera height: 2.5 m
Nearest turbine: 13.87 km	Correct printed image size: 820 x 130 mm	Date and time: 09/08/2020 09:11

Figure 6.35b
Viewpoint 12: Ben Cruachan
Ladyfield Renewable Energy Park
© Crown copyright and database rights (2023) Ordnance Survey 0100031673.



Baseline photograph

This image provides landscape and visual context only



Wireline drawing

OS reference: 206960 E 730468 N
 Eye level: 1127.1 mAOD
 Direction of view: 255.5°
 Nearest turbine: 13.87 km

Horizontal field of view: 90° (cylindrical projection)
 Principal distance: 522 mm
 Paper size: 841 x 297 mm (half A1)
 Correct printed image size: 820 x 130 mm

Camera: Canon EOS 5D Mark II
 Lens: Canon EF 50mm f/1.4
 Camera height: 2.5 m
 Date and time: 09/08/2020 09:11

Carraig Gheal (13.1km)

Beinn Ghlas (10km)

Barran Caltunn (17.7km)



2 5 1 4 8 10 12 3 7 9 6 13 11

Wireline drawing

View flat at a comfortable distance

OS reference: 206960 E 730468 N
 Eye level: 1127.1 mAOD
 Direction of view: 165.5°
 Nearest turbine: 13.87 km

Horizontal field of view: 53.5° (planar projection)
 Principal distance: 812.5 mm
 Paper size: 841 x 297 mm (half A1)
 Correct printed image size: 820 x 260 mm

Camera: Canon EOS 5D Mark II
 Lens: Canon EF 50mm f/1.4
 Camera height: 2.5 m
 Date and time: 09/08/2020 09:11

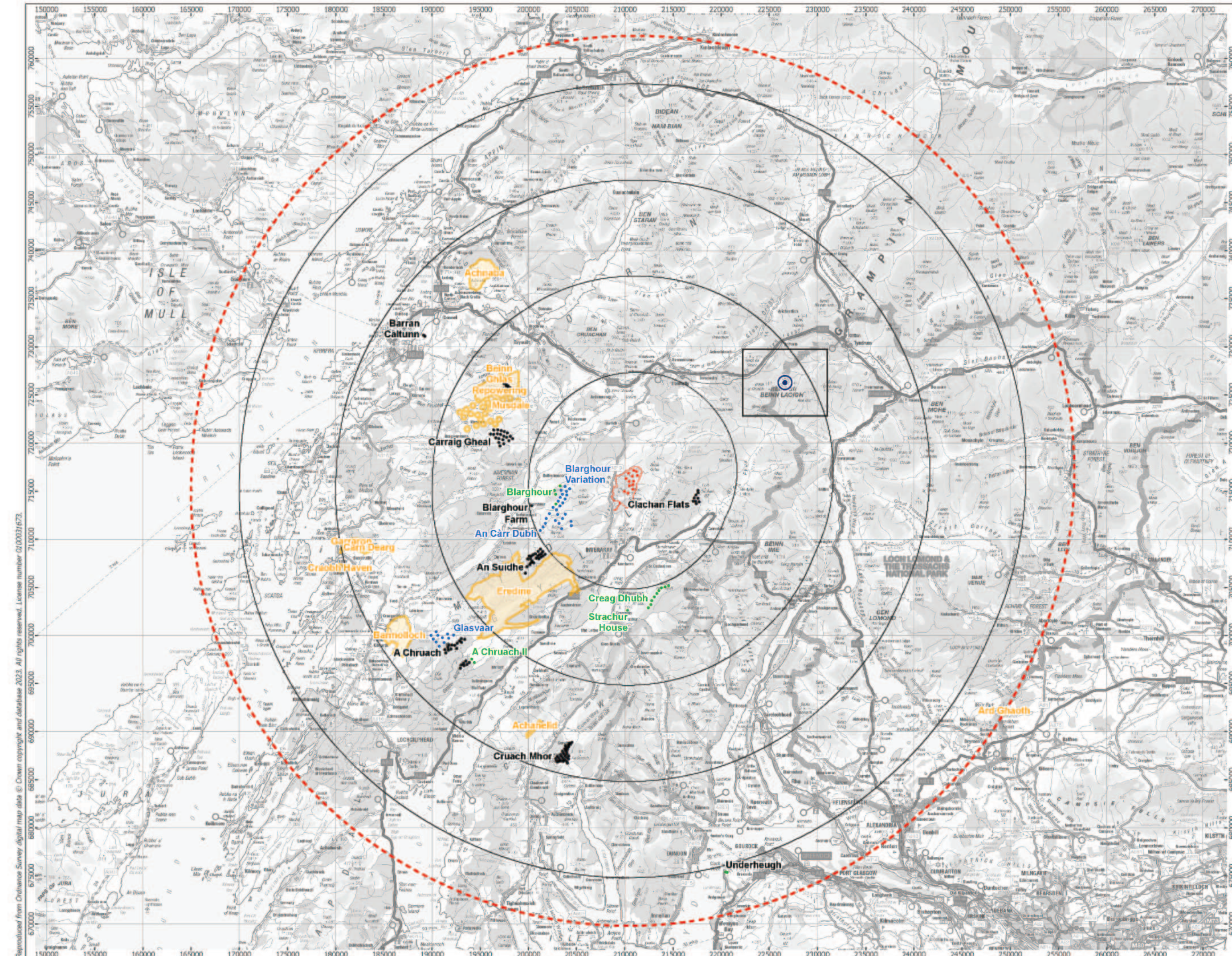


Photomontage: Proposed Development

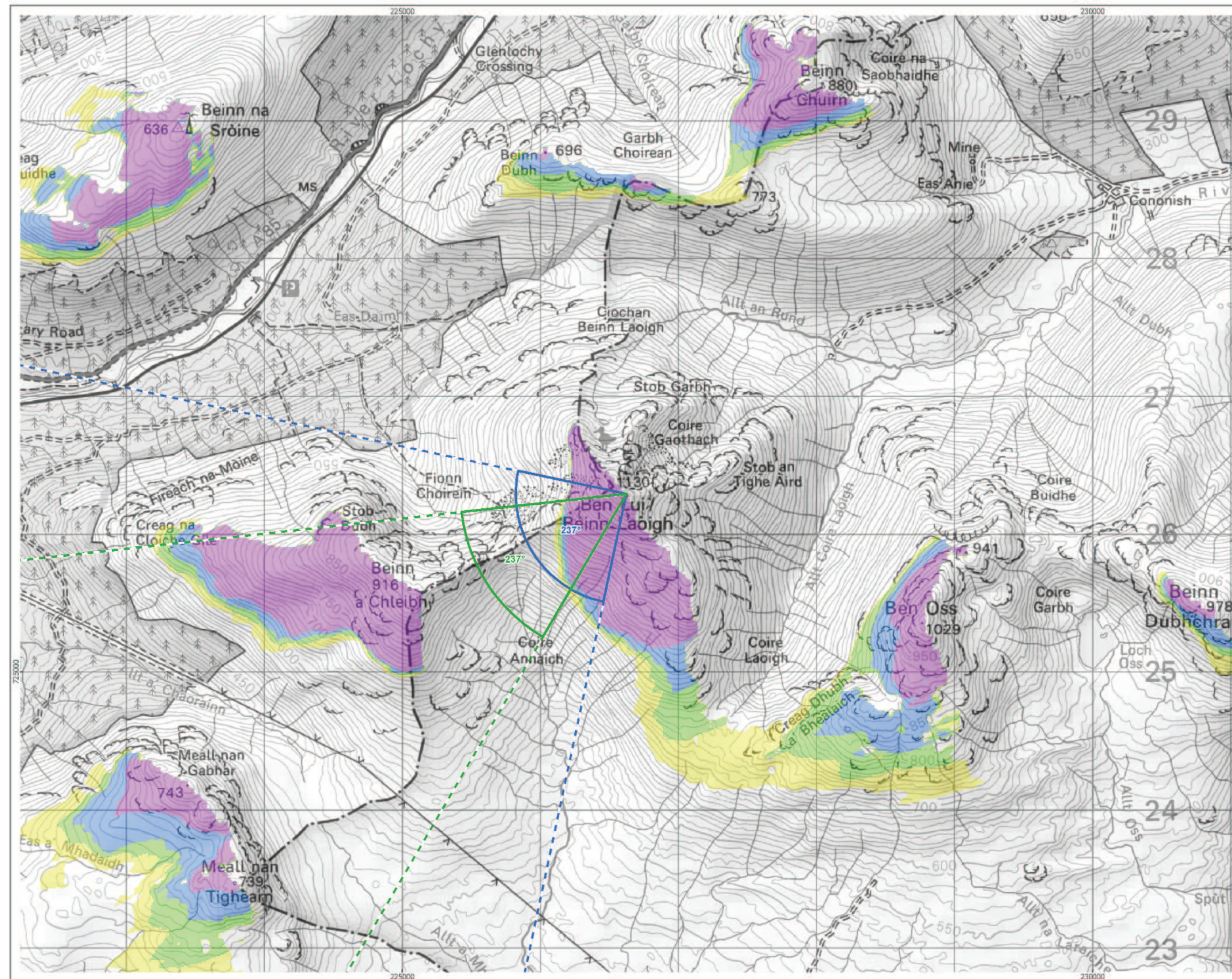
View flat at a comfortable arm's length

OS reference:	206960 E 730468 N	Horizontal field of view:	53.5° (planar projection)	Camera:	Canon EOS 5D Mark II
Eye level:	1127.1 mAOD	Principal distance:	812.5 mm	Lens:	Canon EF 50mm f/1.4
Direction of view:	165.5°	Paper size:	841 x 297 mm (half A1)	Camera height:	2.5 m
Nearest turbine:	13.87 km	Correct printed image size:	820 x 260 mm	Date and time:	09/08/2020 09:11

Figure 6.35e
Viewpoint 12: Ben Cruachan
Ladyfield Renewable Energy Park
© Crown copyright and database rights (2023) Ordnance Survey 0100031673.



Cumulative Wind Farms and Location Plan 1:350,000 Scale



Viewpoint Location Plan with Horizontal Field of View 1:25,000 Scale

open
optimised environments
PART OF SLR

ERM

- Proposed Turbines
- Site Boundary
- 10km Radii
- 45km Study Area
- Viewpoint

Cumulative Wind Farm Status

- Appeal/Application
- Consented
- Operational
- Under Construction

- Scoping Boundaries
- Photomontage and Wireline

No. of Blade Tips Theoretically

- 1
- 2
- 3
- 4

Blade tip: 180m Observer height: 2m
 DTM: OS T5/T50 DTM Surface features: Excluded
 DTM resolution: 10m Earth curvature: Included

1:350,000 Scale @ A3
 0 2 4 6 8 10 km

Produced By: NL Ref:
 Checked By: JP Date: 26/09/2023

Viewpoint Plan
 Figure 6.36a
 Viewpoint 13:
 Ben Lui

Ladyfield Renewable Energy Park
 LVIA