

Wireline drawing

View flat at a comfortable arm's length

OS reference: 211604 E 726728 N
 Eye level: 50.4 mAOD
 Direction of view: 184.5°
 Nearest turbine: 9.57 km

Horizontal field of view: 53.5° (planar projection)
 Principal distance: 812.5 mm
 Paper size: 841 x 297 mm (half A1)
 Correct printed image size: 820 x 260 mm

Camera: Canon EOS 6D Mark II
 Lens: Canon EF 50mm f/1.4
 Camera height: 1.5 m
 Date and time: 08/04/2022 08:33



Photomontage: Proposed Development

View flat at a comfortable arm's length

OS reference: 211604 E 726728 N
Eye level: 50.4 mAOD
Direction of view: 184.5°
Nearest turbine: 9.57 km

Horizontal field of view: 53.5° (planar projection)
Principal distance: 812.5 mm
Paper size: 841 x 297 mm (half A1)
Correct printed image size: 820 x 260 mm

Camera: Canon EOS 6D Mark II
Lens: Canon EF 50mm f/1.4
Camera height: 1.5 m
Date and time: 08/04/2022 08:33

Figure 6.33d
Viewpoint 10: St. Conan's Kirk
Ladyfield Renewable Energy Park
© Crown copyright and database rights (2023) Ordnance Survey 0100031673.



Photomontage: Proposed Development with 2000cd Aviation Lighting

View flat at a comfortable arm's length

OS reference:	211604 E 726728 N	Horizontal field of view:	53.5° (planar projection)	Camera:	Canon EOS 6D
Eye level:	50.4 mAOD	Principal distance:	812.5 mm	Lens:	Canon EF 50mm f/1.4
Direction of view:	184.5°	Paper size:	841 x 297 mm (half A1)	Camera height:	1.5 m
Nearest turbine:	9.57 km	Correct printed image size:	820 x 260 mm	Date and time:	23/09/2022 18:42

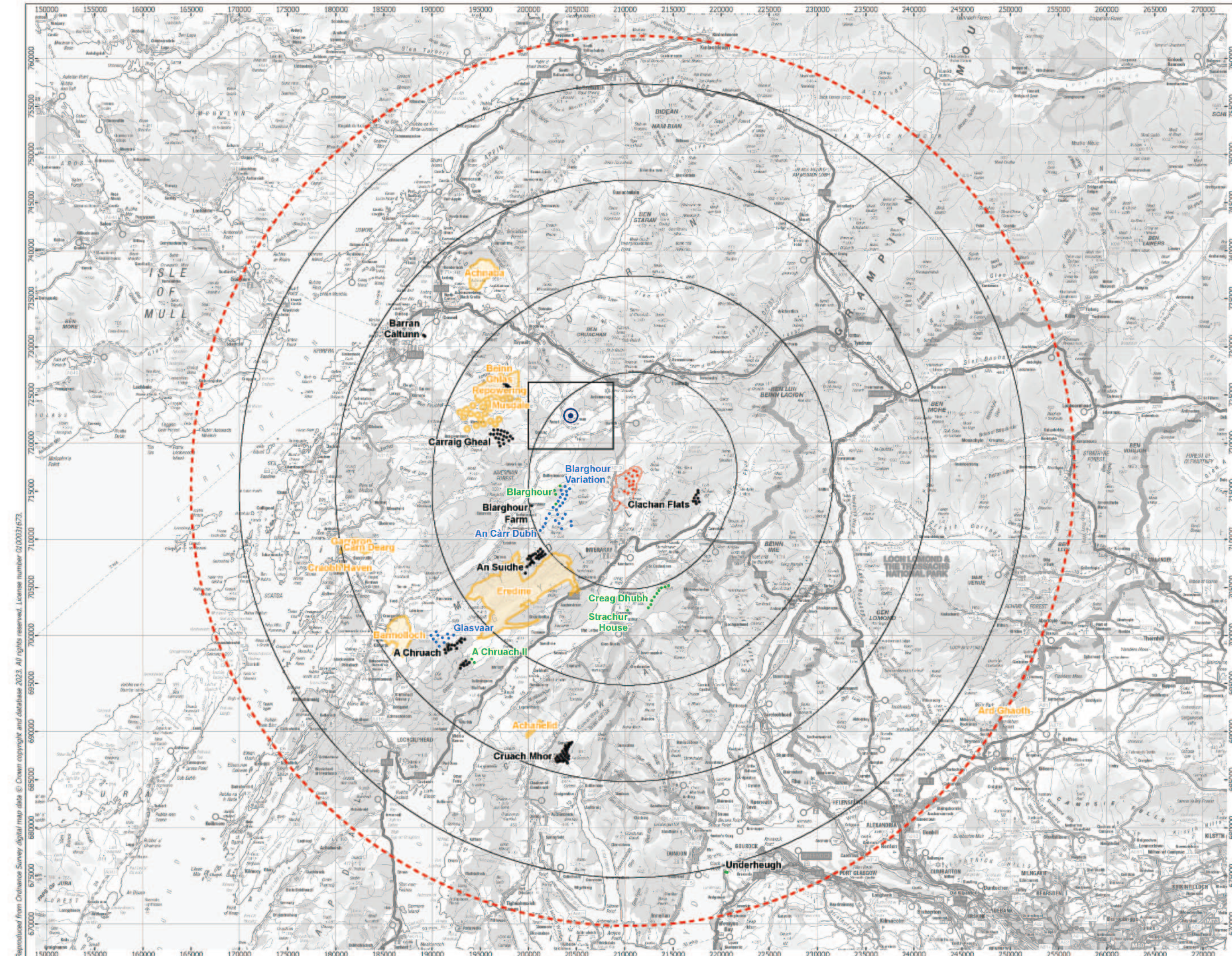
Figure 6.33e
Viewpoint 10: St. Conan's Kirk
Ladyfield Renewable Energy Park
© Crown copyright and database rights (2023) Ordnance Survey 0100031673.



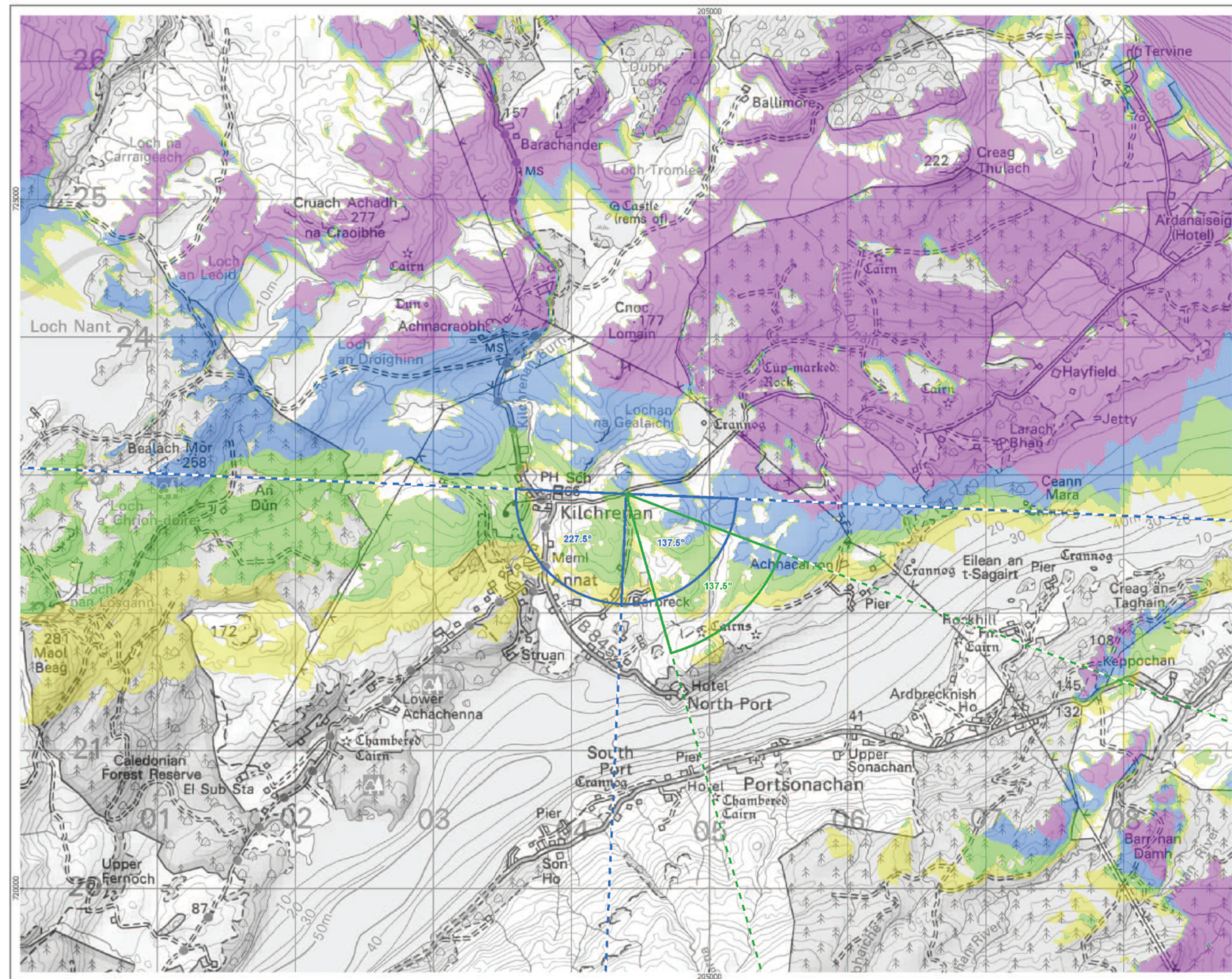
Photomontage: Proposed Development with 200cd Aviation Lighting

View flat at a comfortable arm's length

OS reference:	211604 E 726728 N	Horizontal field of view:	53.5° (planar projection)	Camera:	Canon EOS 6D
Eye level:	50.4 mAOD	Principal distance:	812.5 mm	Lens:	Canon EF 50mm f/1.4
Direction of view:	184.5°	Paper size:	841 x 297 mm (half A1)	Camera height:	1.5 m
Nearest turbine:	9.57 km	Correct printed image size:	820 x 260 mm	Date and time:	23/09/2022 18:42



Cumulative Wind Farms and Location Plan 1:350,000 Scale



Viewpoint Location Plan with Horizontal Field of View 1:25,000 Scale

open
optimised environments
PART OF SLR

ERM

- Proposed Turbines
- Site Boundary
- 10km Radii
- 45km Study Area
- Viewpoint

Cumulative Wind Farm Status

- Appeal/Application
- Consented
- Operational
- Under Construction

Scoping Boundaries

- Photomontage and Wireline

No. of Blade Tips Theoretically

- 100
- 150
- 200
- 250
- 300
- 350
- 400
- 450
- 500
- 550
- 600
- 650
- 700
- 750
- 800
- 850
- 900
- 950
- 1000

Blade tip: 180m
Observer height: 2m
DTM: OS T5/T50 DTM
Surface features: Excluded
DTM resolution: 10m
Earth curvature: Included

1:350,000 Scale @ A3
0 2 4 6 8 10 km

Produced By: NL
Checked By: JP
Ref:
Date: 26/09/2023

Viewpoint Plan
Figure 6.34a
Viewpoint 11:
Kilchrenan

Ladyfield Renewable Energy Park
LVIA