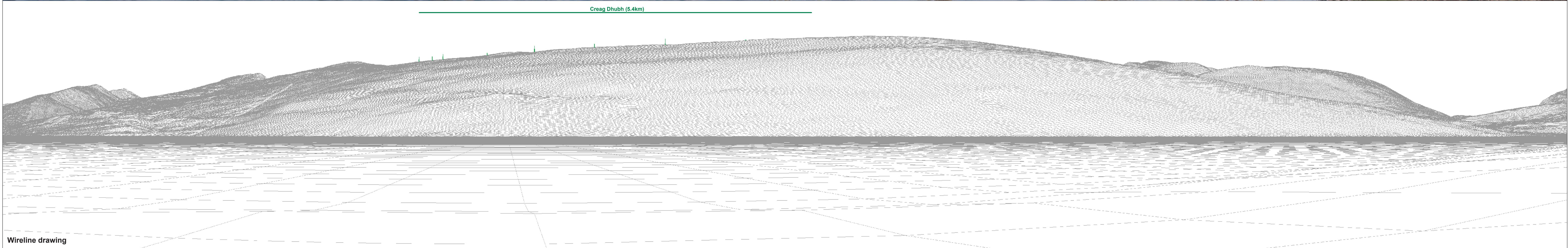




Baseline photograph

This image provides landscape and visual context only



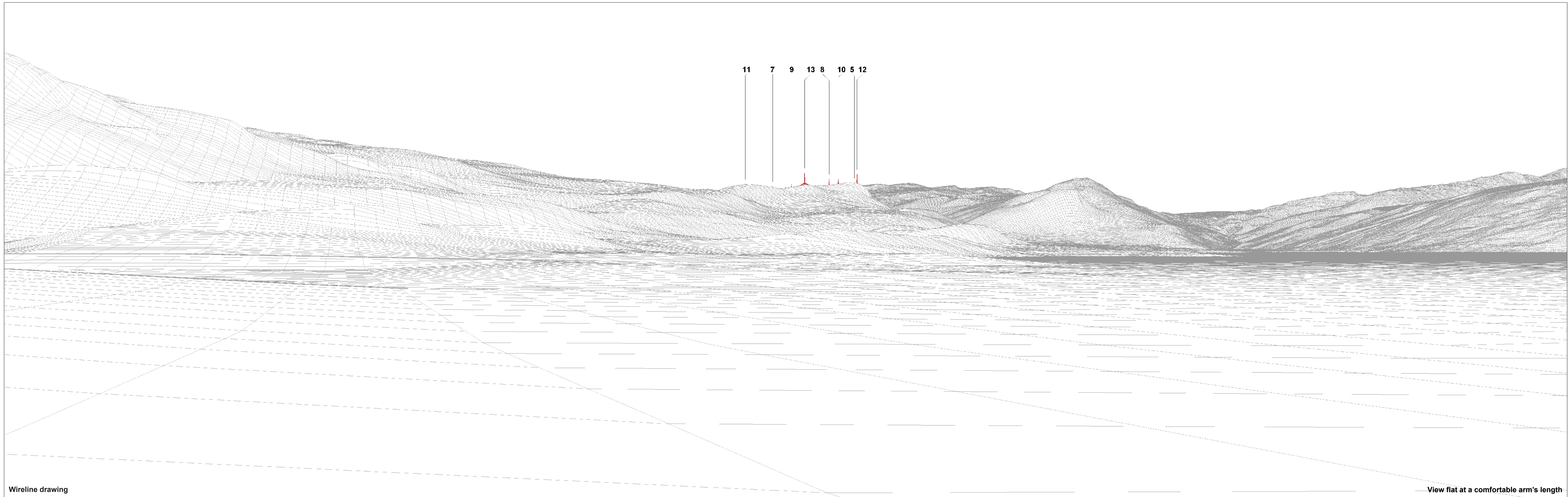
Wireline drawing

OS reference: 207274 E 704531 N
 Eye level: 3.9 mAOD
 Direction of view: 106°
 Nearest turbine: 10.72 km

Horizontal field of view: 90° (cylindrical projection)
 Principal distance: 522 mm
 Paper size: 841 x 297 mm (half A1)
 Correct printed image size: 820 x 130 mm

Camera: Canon EOS 5D Mark II
 Lens: Canon EF 50mm f/1.4
 Camera height: 1.5 m
 Date and time: 22/07/2021 12:07

Creag Dhubh (5.4km)



Wireline drawing

View flat at a comfortable arm's length

OS reference: 207274 E 704531 N
 Eye level: 3.9 mAOD
 Direction of view: 16°
 Nearest turbine: 10.72 km

Horizontal field of view: 53.5° (planar projection)
 Principal distance: 812.5 mm
 Paper size: 841 x 297 mm (half A1)
 Correct printed image size: 820 x 260 mm

Camera: Canon EOS 5D Mark II
 Lens: Canon EF 50mm f/1.4
 Camera height: 1.5 m
 Date and time: 22/07/2021 12:07



Photomontage: Proposed Development

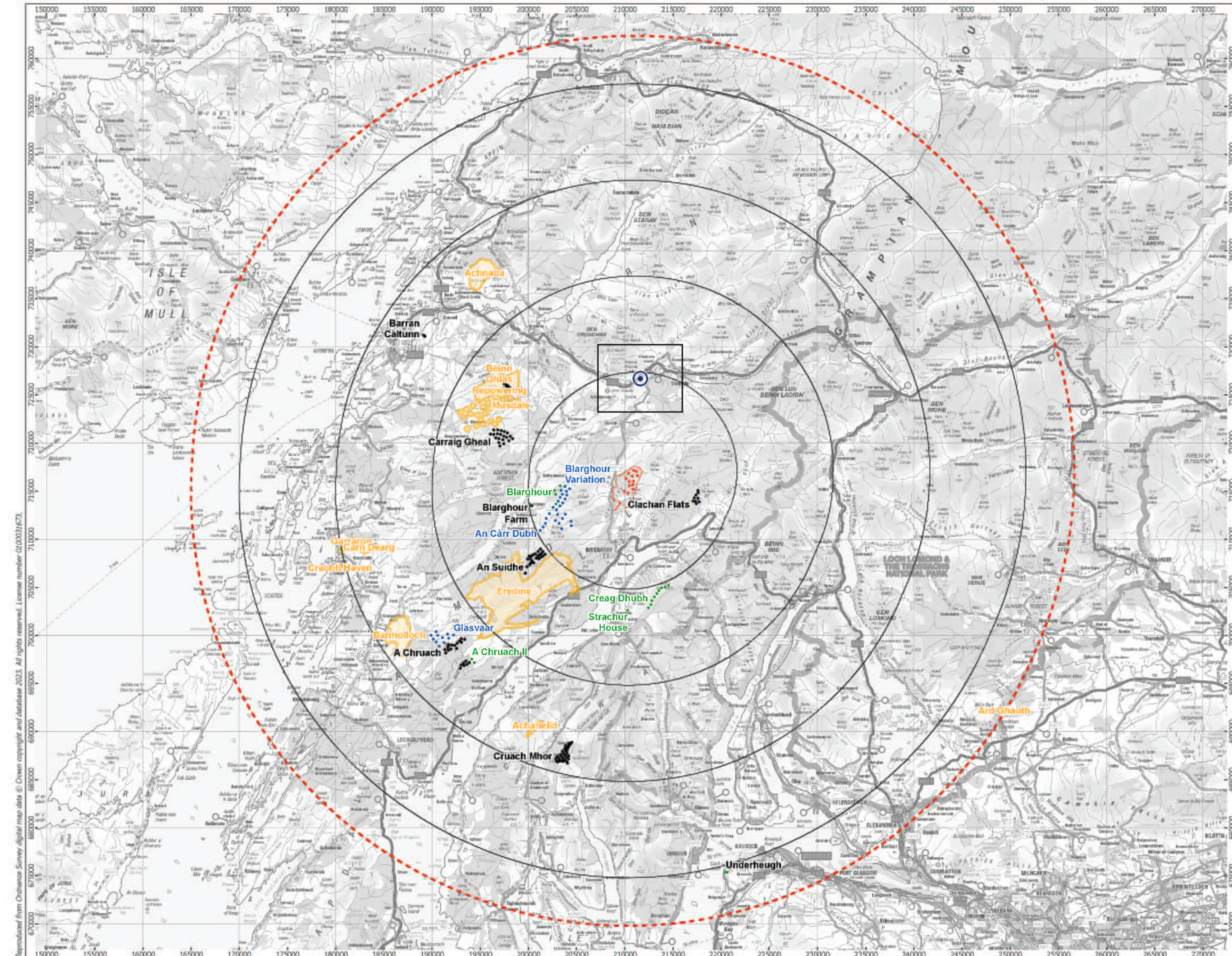
View flat at a comfortable arm's length

OS reference: 207274 E 704531 N
Eye level: 3.9 mAOD
Direction of view: 16°
Nearest turbine: 10.72 km

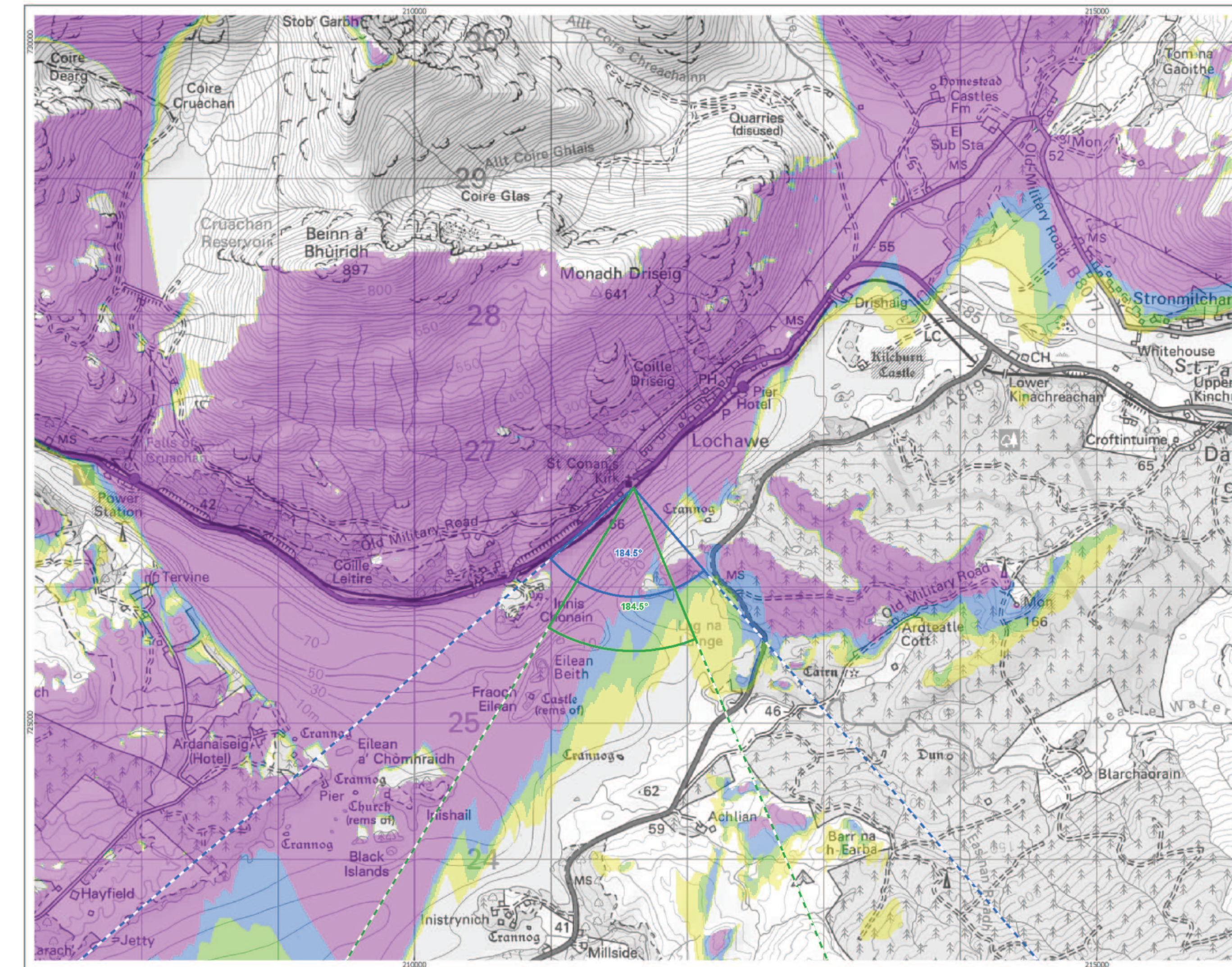
Horizontal field of view: 53.5° (planar projection)
Principal distance: 812.5 mm
Paper size: 841 x 297 mm (half A1)
Correct printed image size: 820 x 260 mm

Camera: Canon EOS 5D Mark II
Lens: Canon EF 50mm f/1.4
Camera height: 1.5 m
Date and time: 22/07/2021 12:07


Figure 6.32e
Viewpoint 9: Rubha nam Frangach
Ladyfield Renewable Energy Park
© Crown copyright and database rights (2023) Ordnance Survey 0100031673.




Cumulative Wind Farms and Location Plan 1:350,000 Scale



Viewpoint Location Plan with Horizontal Field of View 1:25,000 Scale



optimised environments
PART OF SLR



- Proposed Turbines
- Site Boundary
- 10km Radii
- 45km Study Area
- Viewpoint

Cumulative Wind Farm Status

- Appeal/Application
- Consented
- Operational
- Under Construction

Scoping Boundaries

- Scoping Boundaries
- Photomontage and Wireline
- No. of Blade Tips Theoretically

Blade tip: 180m	Observer height: 2m
DTM: OS T5/T50 DTM	Surface features: Excluded
DTM resolution: 10m	Earth curvature: Included

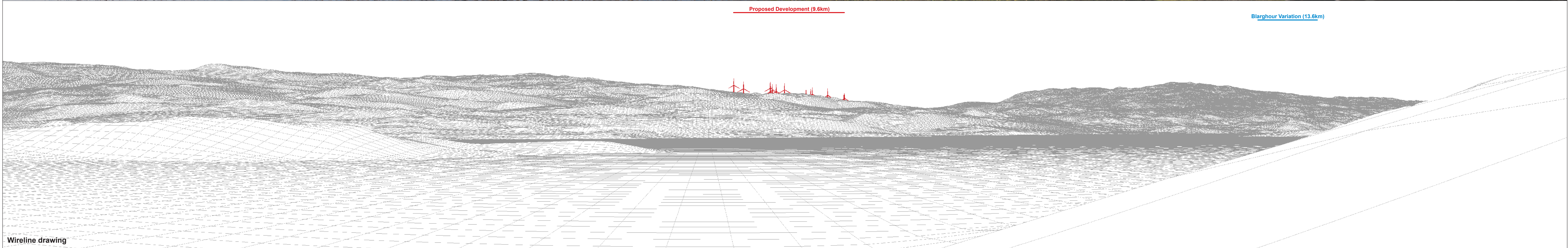
1:350,000 Scale @ A3
0 2 4 6 8 10 km

Produced By: NL	Ref:
Checked By: JP	Date: 26/09/2023

Viewpoint Plan
Figure 6.33a
Viewpoint 10:
St. Conan's Kirk

Ladyfield Renewable Energy Park
LVIA

Reproduced from Ordnance Survey digital map data © Crown copyright and database right 2023. All rights reserved. License number 010001673.
 P:\2020\201532_Ladyfield\GIS\201532_LF\WP\LVIA\201532_LF\WP_LVIA_VP_plan.mxd



OS reference: 211604 E 726728 N	Horizontal field of view: 90° (cylindrical projection)	Camera: Canon EOS 6D Mark II
Eye level: 50.4 mAOD	Principal distance: 522 mm	Lens: Canon EF 50mm f/1.4
Direction of view: 184.5°	Paper size: 841 x 297 mm (half A1)	Camera height: 1.5 m
Nearest turbine: 9.57 km	Correct printed image size: 820 x 130 mm	Date and time: 08/04/2022 08:33

Figure 6.33b
Viewpoint 10: St. Conan's Kirk
Ladyfield Renewable Energy Park
© Crown copyright and database rights (2023) Ordnance Survey 0100031673.