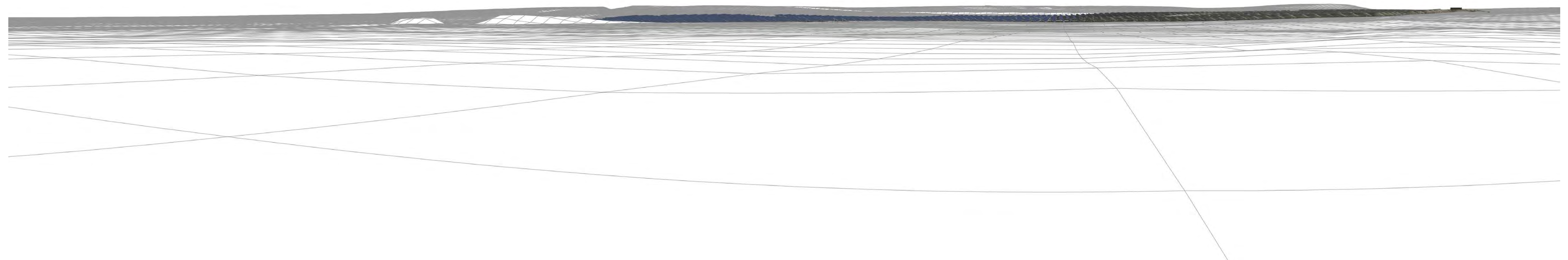


SITE EXTENTS



**Viewing Information**  
 This photograph and visualisation is a cylindrical projection panorama. Hold this sheet at a comfortable arm's length from your eyes and curve the image through 90° and turn head to view. Alternatively, the visualisation can be laid flat and viewed by scanning left or right parallel to the sheet maintaining a 50cm viewing distance between your eye and the page.

This visualisation is a tool for assessment and is best used for comparison in the field from the viewpoint location shown. It cannot be considered a substitute for visiting the viewpoint location.

**3D Visualisation Note**  
 The visualisations do not include the boundary planting proposed in the landscape and biodiversity mitigation and enhancement plan.

**Printing Note**  
 This viewpoint visualisation is spread across a single sheet 841mm wide and 297mm high. To give the correct viewing distance the sheet should be printed at a scale of 1:1 on large format paper and cut to size. Do not print at A3.

**Technical Note**  
 A Technical Methodology as been produced to be read alongside this photograph and visualisation. It explains in detail the approach undertaken and how the visualisations have been produced.

**Six Oaks Renewable Energy Park**  
**Viewpoint 5**  
**3D Model View**



SITE EXTENTS



Viewing Information

This photograph and visualisation is a cylindrical projection panorama. Hold this sheet at a comfortable arm's length from your eyes and curve the image through 90° and turn head to view. Alternatively, the visualisation can be laid flat and viewed by scanning left or right parallel to the sheet maintaining a 50cm viewing distance between your eye and the page.

This visualisation is a tool for assessment and is best used for comparison in the field from the viewpoint location shown. It cannot be considered a substitute for visiting the viewpoint location.

3D Visualisation Note

The visualisations do not include the boundary planting proposed in the landscape and biodiversity mitigation and enhancement plan.

Printing Note

This viewpoint visualisation is spread across a single sheet 841mm wide and 297mm high. To give the correct viewing distance the sheet should be printed at a scale of 1:1 on large format paper and cut to size. Do not print at A3.

Technical Note

A Technical Methodology as been produced to be read alongside this photograph and visualisation. It explains in detail the approach undertaken and how the visualisations have been produced.



Six Oaks Renewable Energy Park  
Viewpoint 5  
Composite View





**Viewing Information**

This photograph and visualisation is a cylindrical projection panorama. Hold this sheet at a comfortable arm's length from your eyes and curve the image through 90° and turn head to view. Alternatively, the visualisation can be laid flat and viewed by scanning left or right parallel to the sheet maintaining a 50cm viewing distance between your eye and the page.

This visualisation is a tool for assessment and is best used for comparison in the field from the viewpoint location shown. It cannot be considered a substitute for visiting the viewpoint location.

**3D Visualisation Note**

The visualisations do not include the boundary planting proposed in the landscape and biodiversity mitigation and enhancement plan.

**Printing Note**

This viewpoint visualisation is spread across a single sheet 841mm wide and 297mm high. To give the correct viewing distance the sheet should be printed at a scale of 1:1 on large format paper and cut to size. Do not print at A3.

**Technical Note**

A Technical Methodology as been produced to be read alongside this photograph and visualisation. It explains in detail the approach undertaken and how the visualisations have been produced.



# Six Oaks Renewable Energy Park

Viewpoint 5  
Photomontage (AVR3)





**Viewing Information**  
This photograph and visualisation is a cylindrical projection panorama. Hold this sheet at a comfortable arm's length from your eyes and curve the image through 90° and turn head to view. Alternatively, the visualisation can be laid flat and viewed by scanning left or right parallel to the sheet maintaining a 50cm viewing distance between your eye and the page.

This visualisation is a tool for assessment and is best used for comparison in the field from the viewpoint location shown. It cannot be considered a substitute for visiting the viewpoint location.

**3D Visualisation Note**  
The visualisations do not include the boundary planting proposed in the landscape and biodiversity mitigation and enhancement plan.

**Printing Note**  
This viewpoint visualisation is spread across a single sheet 841mm wide and 297mm high. To give the correct viewing distance the sheet should be printed at a scale of 1:1 on large format paper and cut to size. Do not print at A3.

**Technical Note**  
A Technical Methodology as been produced to be read alongside this photograph and visualisation. It explains in detail the approach undertaken and how the visualisations have been produced.

**Six Oaks Renewable Energy Park**  
**Viewpoint 6**  
**Existing View**





Extent of 50mm Single Frame Image



Viewing Information

This photograph and visualisation is a cylindrical projection panorama. Hold this sheet at a comfortable arm's length from your eyes and curve the image through 90° and turn head to view. Alternatively, the visualisation can be laid flat and viewed by scanning left or right parallel to the sheet maintaining a 50cm viewing distance between your eye and the page.

This visualisation is a tool for assessment and is best used for comparison in the field from the viewpoint location shown. It cannot be considered a substitute for visiting the viewpoint location.

3D Visualisation Note

The visualisations do not include the boundary planting proposed in the landscape and biodiversity mitigation and enhancement plan.

Printing Note

This viewpoint visualisation is spread across a single sheet 841mm wide and 297mm high. To give the correct viewing distance the sheet should be printed at a scale of 1:1 on large format paper and cut to size. Do not print at A3.

Technical Note

A Technical Methodology as been produced to be read alongside this photograph and visualisation. It explains in detail the approach undertaken and how the visualisations have been produced.



**Six Oaks Renewable Energy Park**  
Viewpoint 6  
Existing View





**Viewing Information**  
 This photograph and visualisation is a cylindrical projection panorama. Hold this sheet at a comfortable arm's length from your eyes and curve the image through 90° and turn head to view. Alternatively, the visualisation can be laid flat and viewed by scanning left or right parallel to the sheet maintaining a 50cm viewing distance between your eye and the page.

This visualisation is a tool for assessment and is best used for comparison in the field from the viewpoint location shown. It cannot be considered a substitute for visiting the viewpoint location.

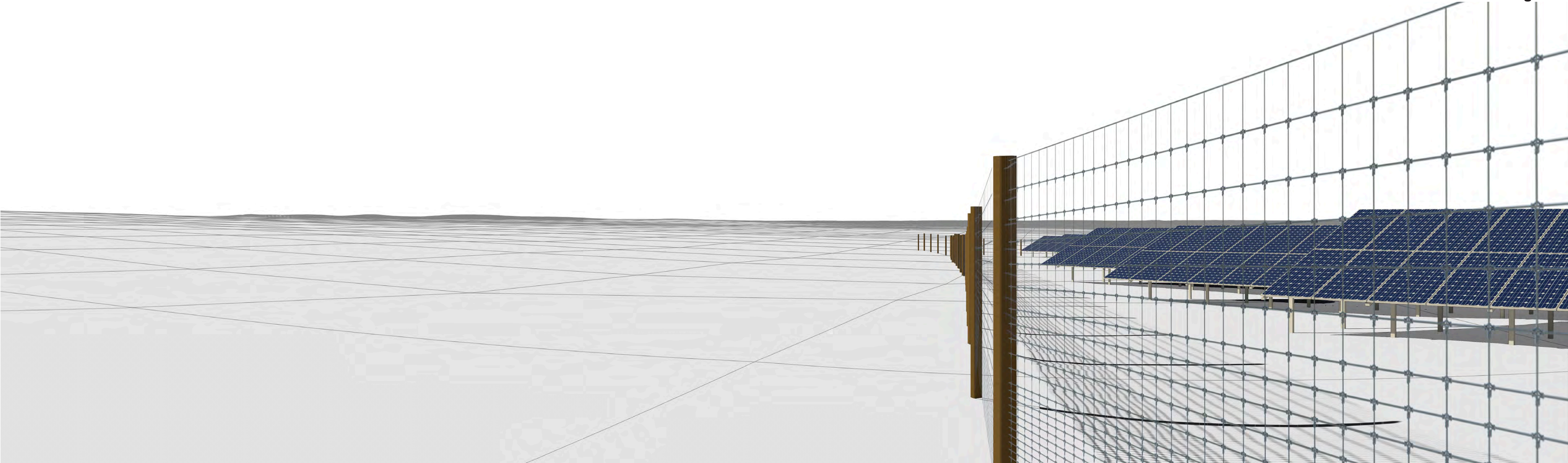
**3D Visualisation Note**  
 The visualisations do not include the boundary planting proposed in the landscape and biodiversity mitigation and enhancement plan.

**Printing Note**  
 This viewpoint visualisation is spread across a single sheet 841mm wide and 297mm high. To give the correct viewing distance the sheet should be printed at a scale of 1:1 on large format paper and cut to size. Do not print at A3.

**Technical Note**  
 A Technical Methodology as been produced to be read alongside this photograph and visualisation. It explains in detail the approach undertaken and how the visualisations have been produced.

**Six Oaks Renewable Energy Park**  
**Viewpoint 6**  
**Existing View**





**Viewing Information**

This photograph and visualisation is a cylindrical projection panorama. Hold this sheet at a comfortable arm's length from your eyes and curve the image through 90° and turn head to view. Alternatively, the visualisation can be laid flat and viewed by scanning left or right parallel to the sheet maintaining a 50cm viewing distance between your eye and the page.

This visualisation is a tool for assessment and is best used for comparison in the field from the viewpoint location shown. It cannot be considered a substitute for visiting the viewpoint location.

**3D Visualisation Note**

The visualisations do not include the boundary planting proposed in the landscape and biodiversity mitigation and enhancement plan.

**Printing Note**

This viewpoint visualisation is spread across a single sheet 841mm wide and 297mm high. To give the correct viewing distance the sheet should be printed at a scale of 1:1 on large format paper and cut to size. Do not print at A3.

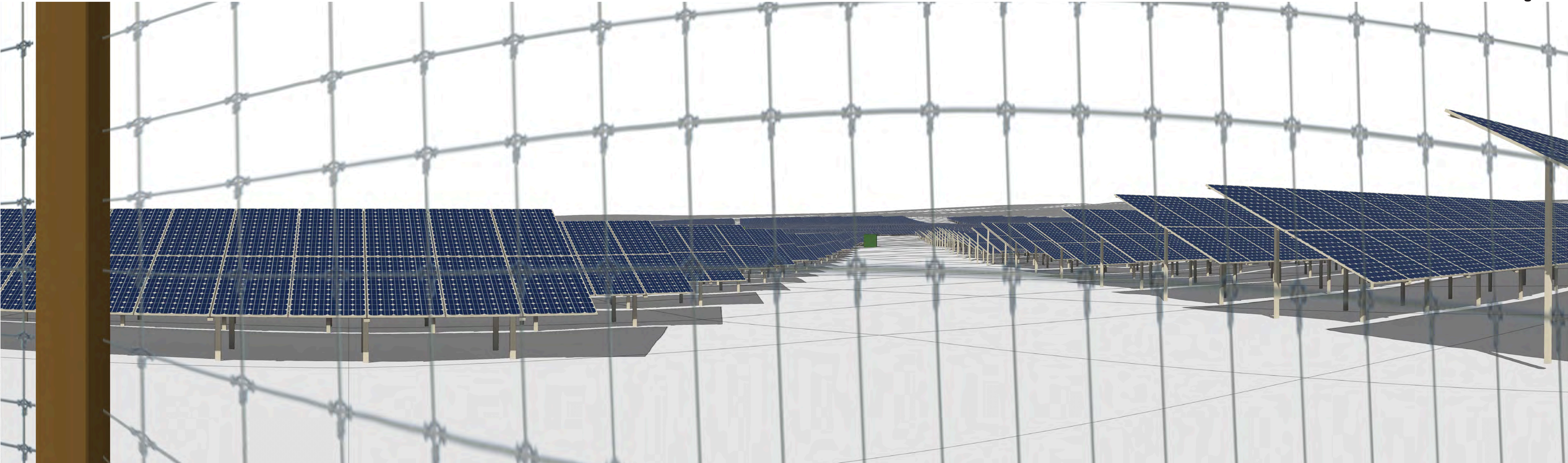
**Technical Note**

A Technical Methodology as been produced to be read alongside this photograph and visualisation. It explains in detail the approach undertaken and how the visualisations have been produced.



**Six Oaks Renewable Energy Park**  
**Viewpoint 6**  
**3D Model View**





**Viewing Information**

This photograph and visualisation is a cylindrical projection panorama. Hold this sheet at a comfortable arm's length from your eyes and curve the image through 90° and turn head to view. Alternatively, the visualisation can be laid flat and viewed by scanning left or right parallel to the sheet maintaining a 50cm viewing distance between your eye and the page.

This visualisation is a tool for assessment and is best used for comparison in the field from the viewpoint location shown. It cannot be considered a substitute for visiting the viewpoint location.

**3D Visualisation Note**

The visualisations do not include the boundary planting proposed in the landscape and biodiversity mitigation and enhancement plan.

**Printing Note**

This viewpoint visualisation is spread across a single sheet 841mm wide and 297mm high. To give the correct viewing distance the sheet should be printed at a scale of 1:1 on large format paper and cut to size. Do not print at A3.

**Technical Note**

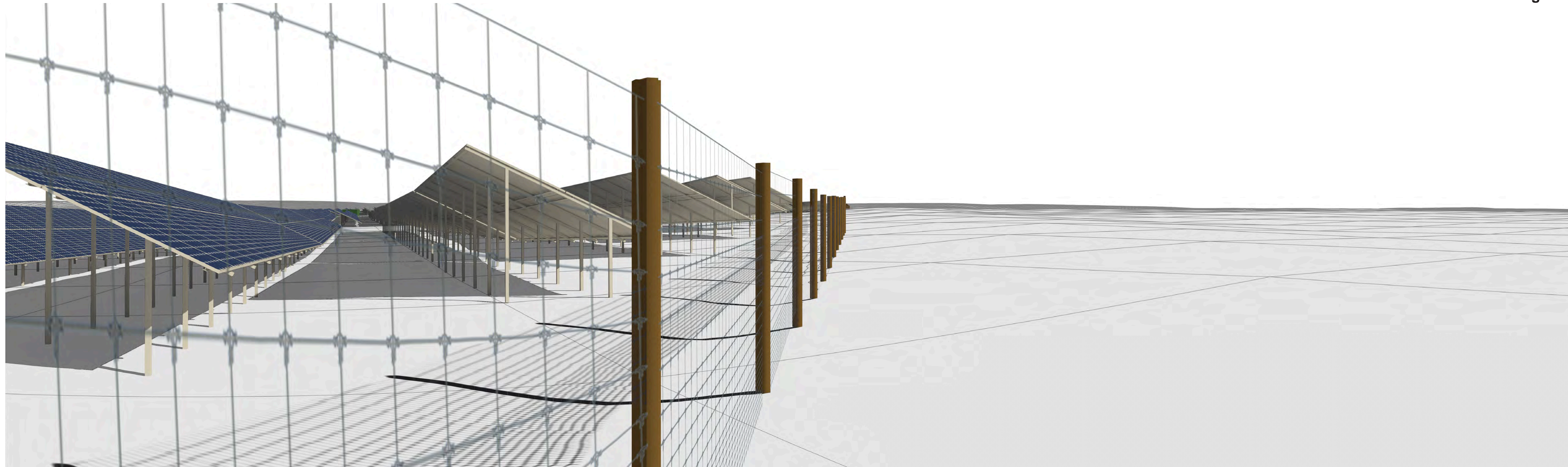
A Technical Methodology as been produced to be read alongside this photograph and visualisation. It explains in detail the approach undertaken and how the visualisations have been produced.



# Six Oaks Renewable Energy Park

Viewpoint 6  
3D Model View





**Viewing Information**

This photograph and visualisation is a cylindrical projection panorama. Hold this sheet at a comfortable arm's length from your eyes and curve the image through 90° and turn head to view. Alternatively, the visualisation can be laid flat and viewed by scanning left or right parallel to the sheet maintaining a 50cm viewing distance between your eye and the page.

This visualisation is a tool for assessment and is best used for comparison in the field from the viewpoint location shown. It cannot be considered a substitute for visiting the viewpoint location.

**3D Visualisation Note**

The visualisations do not include the boundary planting proposed in the landscape and biodiversity mitigation and enhancement plan.

**Printing Note**

This viewpoint visualisation is spread across a single sheet 841mm wide and 297mm high. To give the correct viewing distance the sheet should be printed at a scale of 1:1 on large format paper and cut to size. Do not print at A3.

**Technical Note**

A Technical Methodology as been produced to be read alongside this photograph and visualisation. It explains in detail the approach undertaken and how the visualisations have been produced.



**Six Oaks Renewable Energy Park**  
**Viewpoint 6**  
**Existing View**





**Viewing Information**

This photograph and visualisation is a cylindrical projection panorama. Hold this sheet at a comfortable arm's length from your eyes and curve the image through 90° and turn head to view. Alternatively, the visualisation can be laid flat and viewed by scanning left or right parallel to the sheet maintaining a 50cm viewing distance between your eye and the page.

This visualisation is a tool for assessment and is best used for comparison in the field from the viewpoint location shown. It cannot be considered a substitute for visiting the viewpoint location.

**3D Visualisation Note**

The visualisations do not include the boundary planting proposed in the landscape and biodiversity mitigation and enhancement plan.

**Printing Note**

This viewpoint visualisation is spread across a single sheet 841mm wide and 297mm high. To give the correct viewing distance the sheet should be printed at a scale of 1:1 on large format paper and cut to size. Do not print at A3.

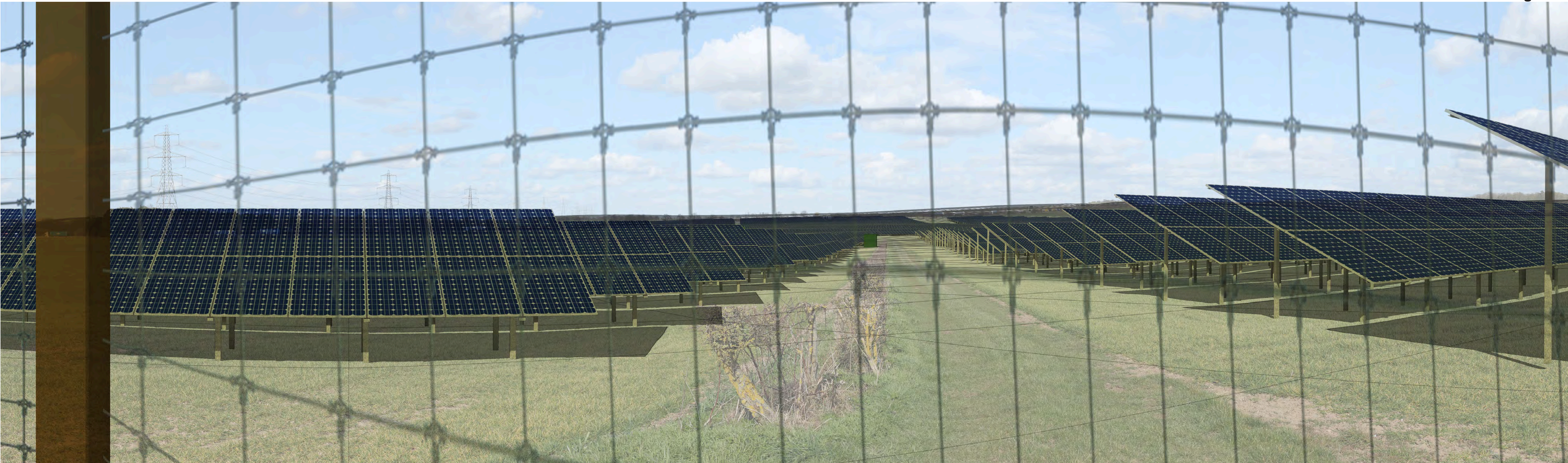
**Technical Note**

A Technical Methodology as been produced to be read alongside this photograph and visualisation. It explains in detail the approach undertaken and how the visualisations have been produced.



**Six Oaks Renewable Energy Park**  
**Viewpoint 6**  
**Composite View**





**Viewing Information**

This photograph and visualisation is a cylindrical projection panorama. Hold this sheet at a comfortable arm's length from your eyes and curve the image through 90° and turn head to view. Alternatively, the visualisation can be laid flat and viewed by scanning left or right parallel to the sheet maintaining a 50cm viewing distance between your eye and the page.

This visualisation is a tool for assessment and is best used for comparison in the field from the viewpoint location shown. It cannot be considered a substitute for visiting the viewpoint location.

**3D Visualisation Note**

The visualisations do not include the boundary planting proposed in the landscape and biodiversity mitigation and enhancement plan.

**Printing Note**

This viewpoint visualisation is spread across a single sheet 841mm wide and 297mm high. To give the correct viewing distance the sheet should be printed at a scale of 1:1 on large format paper and cut to size. Do not print at A3.

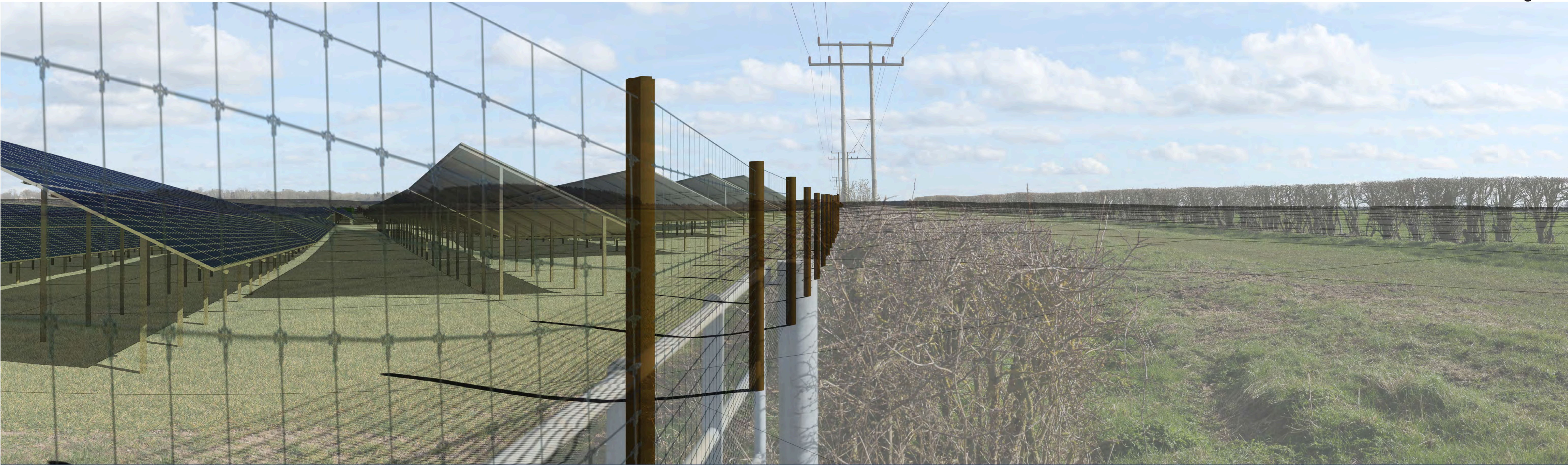
**Technical Note**

A Technical Methodology as been produced to be read alongside this photograph and visualisation. It explains in detail the approach undertaken and how the visualisations have been produced.



**Six Oaks Renewable Energy Park**  
**Viewpoint 6**  
**Composite View**





**Viewing Information**  
 This photograph and visualisation is a cylindrical projection panorama. Hold this sheet at a comfortable arm's length from your eyes and curve the image through 90° and turn head to view. Alternatively, the visualisation can be laid flat and viewed by scanning left or right parallel to the sheet maintaining a 50cm viewing distance between your eye and the page.

**3D Visualisation Note**  
 The visualisations do not include the boundary planting proposed in the landscape and biodiversity mitigation and enhancement plan.

**Printing Note**  
 This viewpoint visualisation is spread across a single sheet 841mm wide and 297mm high. To give the correct viewing distance the sheet should be printed at a scale of 1:1 on large format paper and cut to size. Do not print at A3.

**Technical Note**  
 A Technical Methodology as been produced to be read alongside this photograph and visualisation. It explains in detail the approach undertaken and how the visualisations have been produced.

**Six Oaks Renewable Energy Park**  
**Viewpoint 6**  
**Composite View**

**RIDGE CLEAN ENERGY**





**Viewing Information**  
 This photograph and visualisation is a cylindrical projection panorama. Hold this sheet at a comfortable arm's length from your eyes and curve the image through 90° and turn head to view. Alternatively, the visualisation can be laid flat and viewed by scanning left or right parallel to the sheet maintaining a 50cm viewing distance between your eye and the page.

This visualisation is a tool for assessment and is best used for comparison in the field from the viewpoint location shown. It cannot be considered a substitute for visiting the viewpoint location.

**3D Visualisation Note**  
 The visualisations do not include the boundary planting proposed in the landscape and biodiversity mitigation and enhancement plan.

**Printing Note**  
 This viewpoint visualisation is spread across a single sheet 841mm wide and 297mm high. To give the correct viewing distance the sheet should be printed at a scale of 1:1 on large format paper and cut to size. Do not print at A3.

**Technical Note**  
 A Technical Methodology as been produced to be read alongside this photograph and visualisation. It explains in detail the approach undertaken and how the visualisations have been produced.

**Six Oaks Renewable Energy Park**  
**Viewpoint 6**  
**Photomontage (AVR3)**





**Viewing Information**

This photograph and visualisation is a cylindrical projection panorama. Hold this sheet at a comfortable arm's length from your eyes and curve the image through 90° and turn head to view. Alternatively, the visualisation can be laid flat and viewed by scanning left or right parallel to the sheet maintaining a 50cm viewing distance between your eye and the page.

This visualisation is a tool for assessment and is best used for comparison in the field from the viewpoint location shown. It cannot be considered a substitute for visiting the viewpoint location.

**3D Visualisation Note**

The visualisations do not include the boundary planting proposed in the landscape and biodiversity mitigation and enhancement plan.

**Printing Note**

This viewpoint visualisation is spread across a single sheet 841mm wide and 297mm high. To give the correct viewing distance the sheet should be printed at a scale of 1:1 on large format paper and cut to size. Do not print at A3.

**Technical Note**

A Technical Methodology as been produced to be read alongside this photograph and visualisation. It explains in detail the approach undertaken and how the visualisations have been produced.



# Six Oaks Renewable Energy Park

Viewpoint 6  
Photomontage (AVR3)